

Product datasheet for **TA388810M**

IFT20 Rabbit Polyclonal Antibody

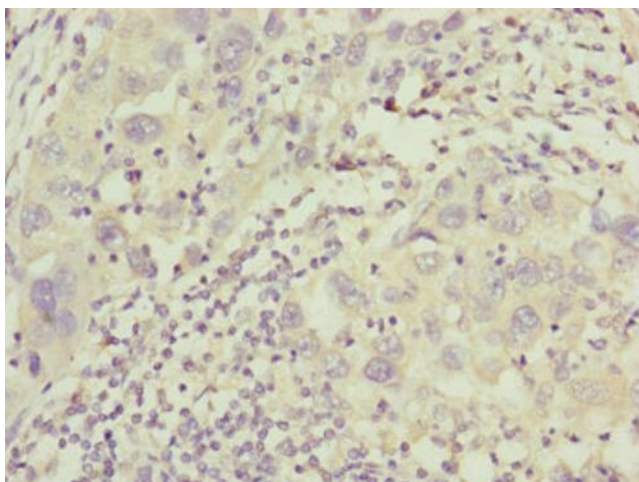
Product data:

Product Type:	Primary Antibodies
Applications:	IHC, WB
Recommended Dilution:	Recommended dilution: WB:1:1000-1:5000, IHC:1:20-1:200
Reactivity:	Mouse, Human
Host:	Rabbit
Isotype:	IgG
Clonality:	Polyclonal
Immunogen:	Recombinant Human Intraflagellar transport protein 20 homolog protein (1-132AA)
Formulation:	PBS with 0.02% sodium azide, 50% glycerol, pH7.3.
Concentration:	lot specific
Purification:	Antigen Affinity Purified
Conjugation:	Unconjugated
Storage:	Upon receipt, store at -20°C or -80°C. Avoid repeated freeze.
Stability:	1 year from dispatch.
Database Link:	Q8IY31
Background:	Part of intraflagellar transport (IFT) particles involved in ciliary process assembly. May play a role in the trafficking of ciliary membrane proteins from the Golgi complex to the cilium. Also involved in autophagy since it is required for trafficking of ATG16L and the expansion of the autophagic compartment.

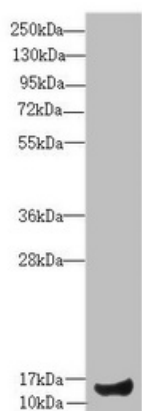


[View online »](#)

Product images:



Immunohistochemistry of paraffin-embedded human liver cancer using [TA388810] at dilution of 1:100



Western blot
All lanes: IFT20 antibody at 4.68 µg/ml + Mouse large intestine tissue
Secondary
Goat polyclonal to rabbit IgG at 1/10000 dilution
Predicted band size: 16, 19, 13 kDa
Observed band size: 16 kDa