

## Product datasheet for **TA388805**

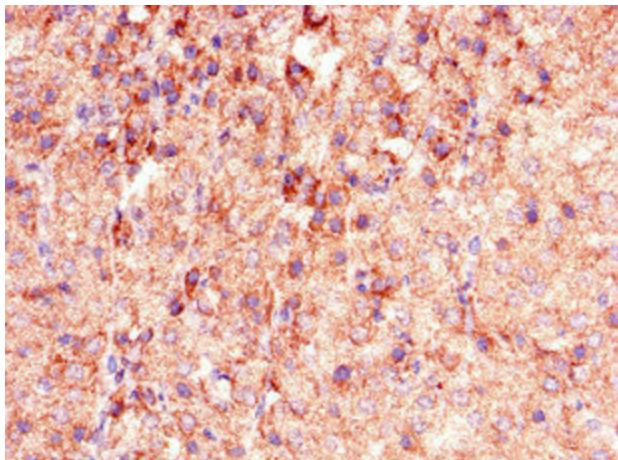
### PHLDB2 Rabbit Polyclonal Antibody

#### Product data:

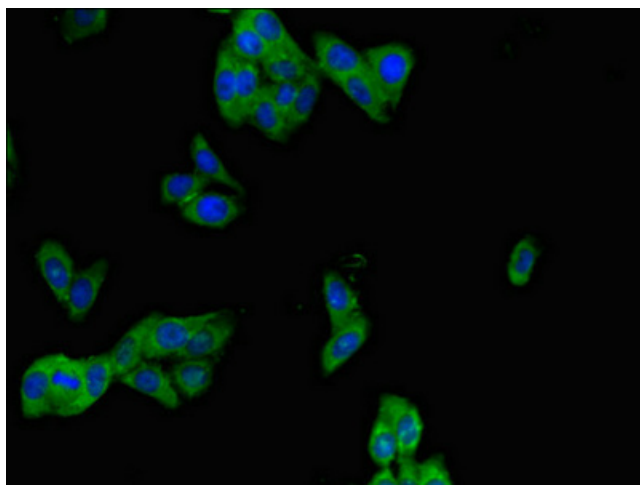
Product Type:	Primary Antibodies
Applications:	IF, IHC, WB
Recommended Dilution:	Recommended dilution: WB:1:500-1:5000, IHC:1:20-1:200, IF:1:50-1:200
Reactivity:	Mouse, Human
Host:	Rabbit
Isotype:	IgG
Clonality:	Polyclonal
Immunogen:	Recombinant Human Pleckstrin homology-like domain family B member 2 protein (734-1030AA)
Formulation:	Preservative: 0.03% Proclin 300 Constituents: 50% Glycerol, 0.01M PBS, PH 7.4
Concentration:	lot specific
Purification:	>95%, Protein G purified
Conjugation:	Unconjugated
Storage:	Upon receipt, store at -20°C or -80°C. Avoid repeated freeze.
Stability:	1 year from dispatch.
Database Link:	<a href="#">Q86SQ0</a>
Background:	Seems to be involved in the assembly of the postsynaptic apparatus. May play a role in acetyl-choline receptor (AChR) aggregation in the postsynaptic membrane (By similarity).



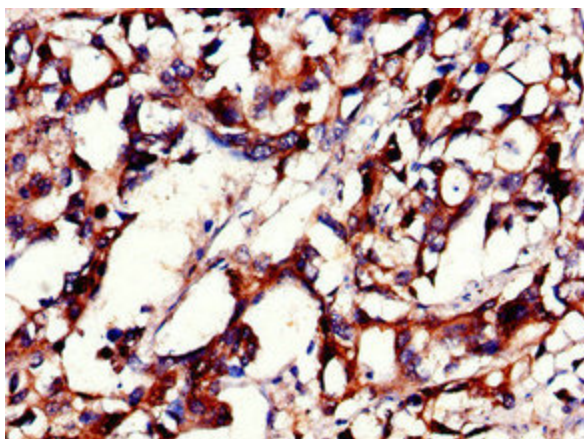
[View online »](#)

**Product images:**

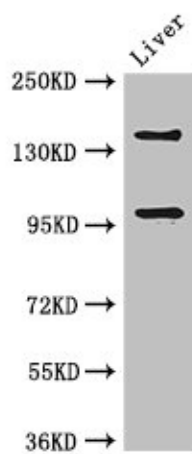
Immunohistochemistry of paraffin-embedded human adrenal gland tissue using TA388805 at dilution of 1:100



Immunofluorescent analysis of HepG2 cells using TA388805 at dilution of 1:100 and Alexa Fluor 488-conjugated AffiniPure Goat Anti-Rabbit IgG(H+L)



Immunohistochemistry of paraffin-embedded human gastric cancer using TA388805 at dilution of 1:100



Western Blot  
Positive WB detected in: Mouse liver tissue  
All lanes: PHLDB2 antibody at 3 $\mu$ g/ml  
Secondary  
Goat polyclonal to rabbit IgG at 1/50000 dilution  
Predicted band size: 143, 137, 140 kDa  
Observed band size: 143, 96 kDa