

Product datasheet for **TA388801**

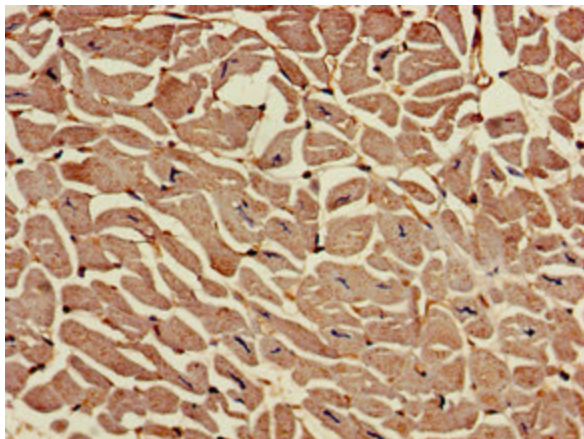
RAI1 Rabbit Polyclonal Antibody

Product data:

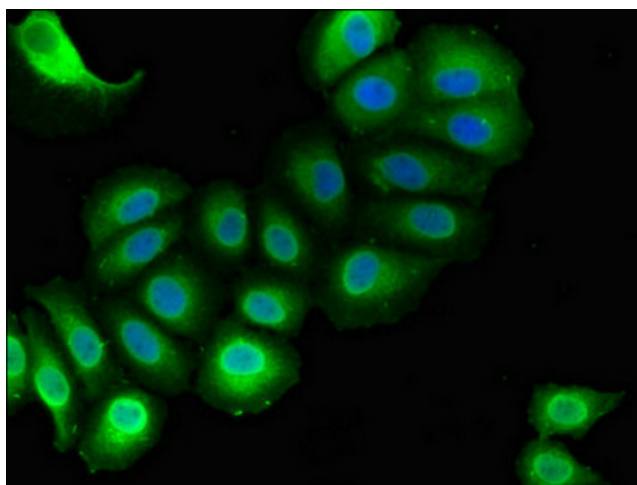
Product Type:	Primary Antibodies
Applications:	IF, IHC, WB
Recommended Dilution:	Recommended dilution: WB:1:500-1:5000, IHC:1:20-1:200, IF:1:50-1:200
Reactivity:	Human
Host:	Rabbit
Isotype:	IgG
Clonality:	Polyclonal
Immunogen:	Recombinant Human Retinoic acid-induced protein 1 protein (617-823AA)
Formulation:	Preservative: 0.03% Proclin 300 Constituents: 50% Glycerol, 0.01M PBS, pH 7.4
Concentration:	lot specific
Purification:	>95%, Protein G purified
Conjugation:	Unconjugated
Storage:	Upon receipt, store at -20°C or -80°C. Avoid repeated freeze.
Stability:	1 year from dispatch.
Database Link:	Q7Z5I4
Background:	Transcriptional regulator of the circadian clock components: CLOCK, ARNTL/BMAL1, ARNTL2/BMAL2, PER1/3, CRY1/2, NR1D1/2 and RORA/C. Positively regulates the transcriptional activity of CLOCK a core component of the circadian clock. Regulates transcription through chromatin remodeling by interacting with other proteins in chromatin as well as proteins in the basic transcriptional machinery. May be important for embryonic and postnatal development. May be involved in neuronal differentiation.



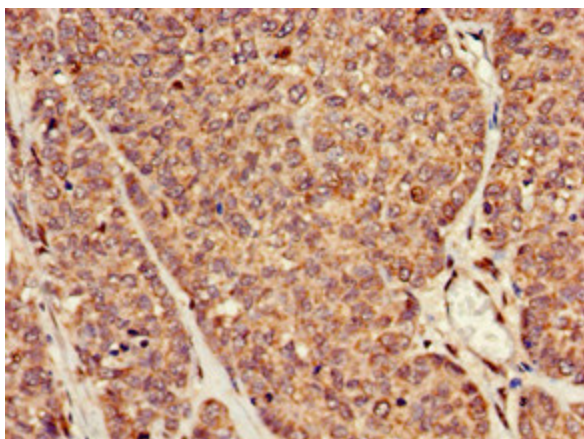
[View online »](#)

Product images:

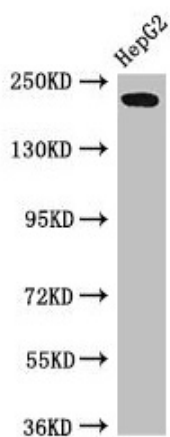
Immunohistochemistry of paraffin-embedded human heart tissue using TA388801 at dilution of 1:100



Immunofluorescent analysis of A549 cells using TA388801 at dilution of 1:100 and Alexa Fluor 488-conjugated AffiniPure Goat Anti-Rabbit IgG(H+L)



Immunohistochemistry of paraffin-embedded human ovarian cancer using TA388801 at dilution of 1:100



Western Blot
Positive WB detected in: HepG2 whole cell lysate
All lanes: RAI1 antibody at 3 μ g/ml
Secondary
Goat polyclonal to rabbit IgG at 1/50000 dilution
Predicted band size: 204, 199, 176, 105 kDa
Observed band size: 204 kDa