

Product datasheet for **TA388794M**

CFAP65 Rabbit Polyclonal Antibody

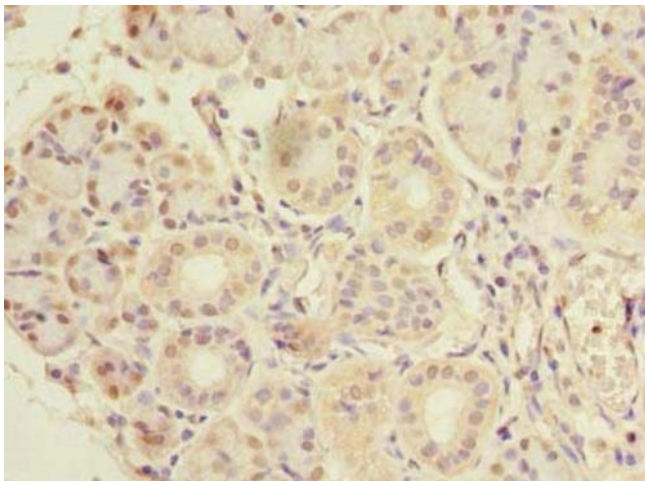
Product data:

Product Type:	Primary Antibodies
Applications:	IF, IHC, WB
Recommended Dilution:	Recommended dilution: WB:1:500-1:2000, IHC:1:20-1:200, IF:1:50-1:200
Reactivity:	Human
Host:	Rabbit
Isotype:	IgG
Clonality:	Polyclonal
Immunogen:	Recombinant Human Cilia- and flagella-associated protein 65 protein (2-164AA)
Formulation:	Preservative: 0.03% Proclin 300 Constituents: 50% Glycerol, 0.01M PBS, PH 7.4
Concentration:	lot specific
Purification:	>95%, Protein G purified
Conjugation:	Unconjugated
Storage:	Upon receipt, store at -20°C or -80°C. Avoid repeated freeze.
Stability:	1 year from dispatch.
Database Link:	Q6ZU64
Background:	May play a role in sperm motility.

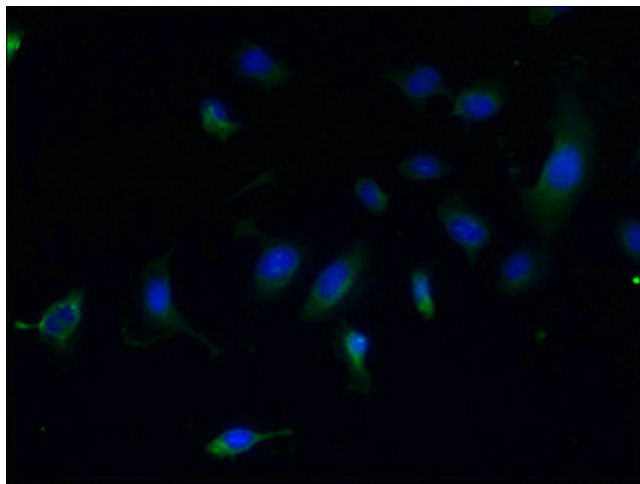


[View online »](#)

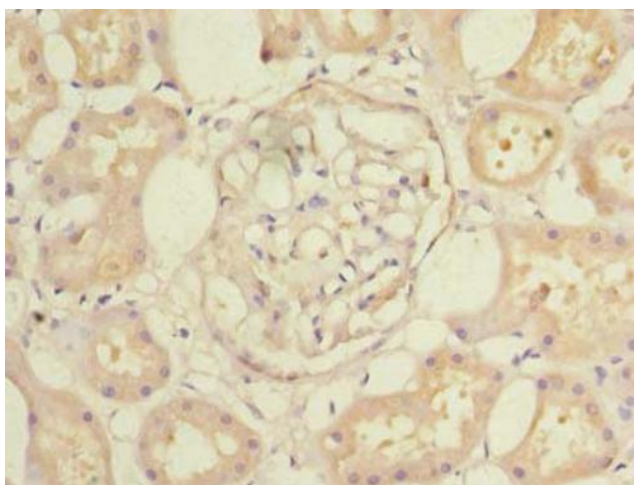
Product images:



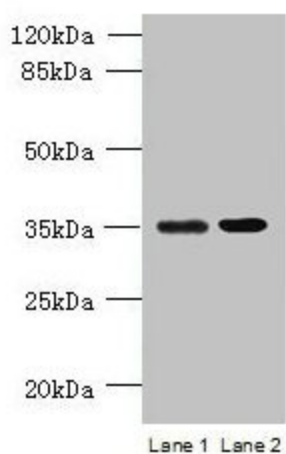
Immunohistochemistry of paraffin-embedded human pancreatic tissue using [TA388794] at dilution of 1:100



Immunofluorescent analysis of U251 cells using [TA388794] at dilution of 1:100 and Alexa Fluor 488-conjugated AffiniPure Goat Anti-Rabbit IgG(H+L)



Immunohistochemistry of paraffin-embedded human kidney tissue using [TA388794] at dilution of 1:100



Western blot
All lanes: CFAP65 antibody at 8µg/ml
Lane 1: U251 whole cell lysate
Lane 2: U87 whole cell lysate
Secondary
Goat polyclonal to rabbit IgG at 1/10000 dilution
Predicted band size: 218, 19, 82, 88 kDa
Observed band size: 35 kDa