

Product datasheet for **TA388787**

LRRC31 Rabbit Polyclonal Antibody

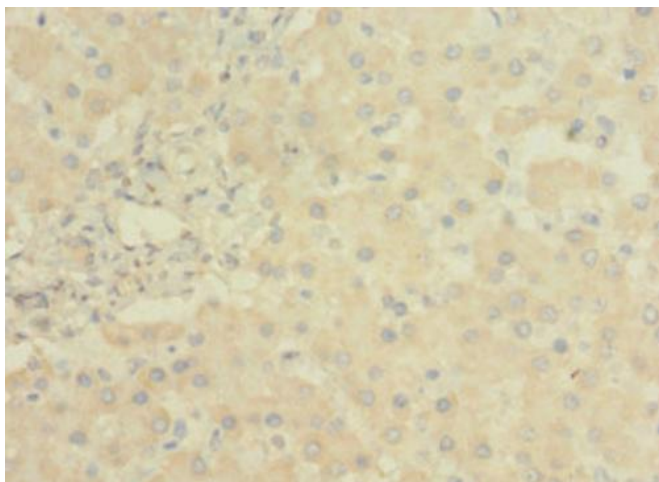
Product data:

Product Type:	Primary Antibodies
Applications:	IHC, WB
Recommended Dilution:	Recommended dilution: WB:1:500-1:5000, IHC:1:20-1:200
Reactivity:	Mouse, Human
Host:	Rabbit
Isotype:	IgG
Clonality:	Polyclonal
Immunogen:	Recombinant Human Leucine-rich repeat-containing protein 31 protein (1-300AA)
Formulation:	Preservative: 0.03% Proclin 300 Constituents: 50% Glycerol, 0.01M PBS, PH 7.4
Concentration:	lot specific
Purification:	>95%, Protein G purified
Conjugation:	Unconjugated
Storage:	Upon receipt, store at -20°C or -80°C. Avoid repeated freeze.
Stability:	1 year from dispatch.
Database Link:	Q6UY01

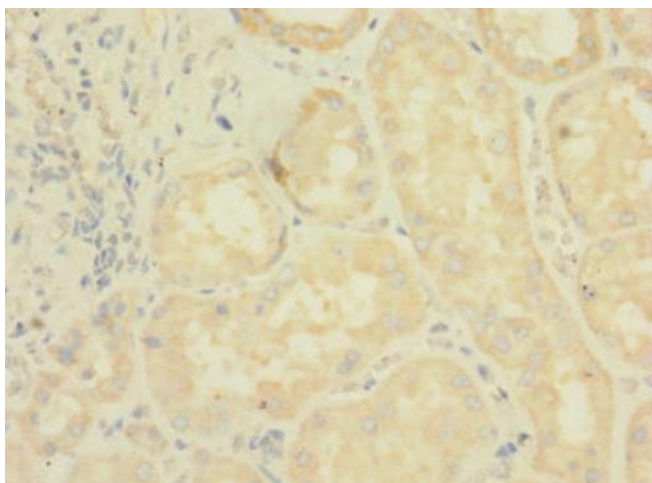


[View online »](#)

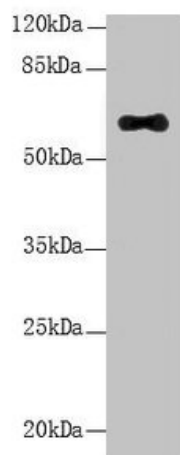
Product images:



Immunohistochemistry of paraffin-embedded human liver tissue using TA388787 at dilution of 1:100



Immunohistochemistry of paraffin-embedded human kidney tissue using TA388787 at dilution of 1:100



Western Blot

All lanes: LRRC31 antibody at 5µg/ml + Mouse small intestine tissue

Secondary

Goat polyclonal to rabbit IgG at 1/10000 dilution

Predicted band size: 62, 56, 39, 49 kDa

Observed band size: 62 kDa