

## Product datasheet for **TA388786**

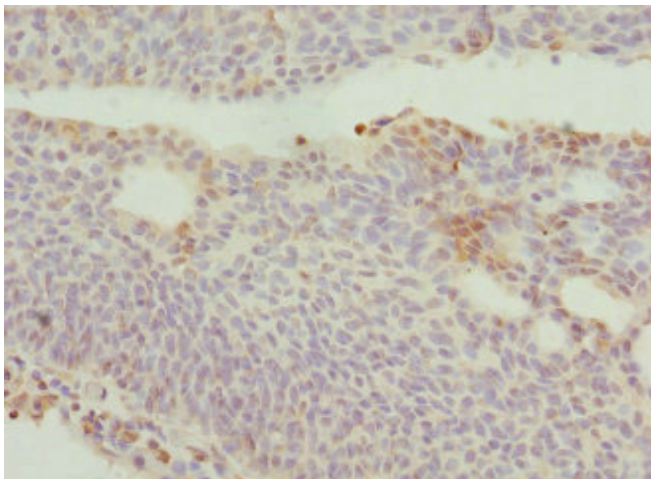
### DRAM2 Rabbit Polyclonal Antibody

#### Product data:

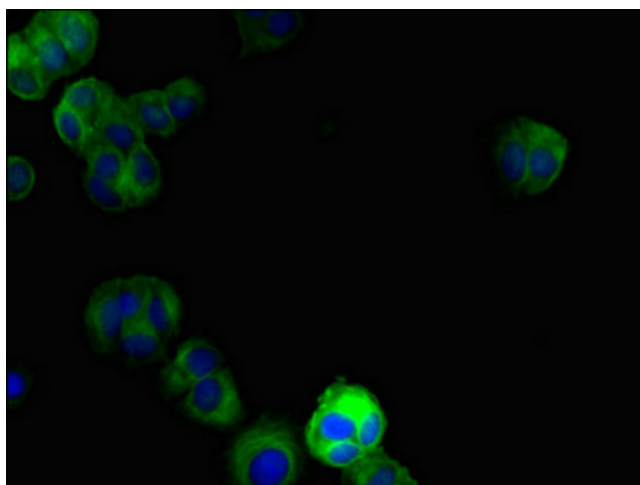
Product Type:	Primary Antibodies
Applications:	IF, IHC, WB
Recommended Dilution:	Recommended dilution: WB:1:1000-1:5000, IHC:1:20-1:200, IF:1:50-1:200
Reactivity:	Mouse, Human
Host:	Rabbit
Isotype:	IgG
Clonality:	Polyclonal
Immunogen:	Recombinant Human DNA damage-regulated autophagy modulator protein 2 protein (182-266AA)
Formulation:	PBS with 0.02% sodium azide, 50% glycerol, pH7.3.
Concentration:	lot specific
Purification:	Antigen Affinity Purified
Conjugation:	Unconjugated
Storage:	Upon receipt, store at -20°C or -80°C. Avoid repeated freeze.
Stability:	1 year from dispatch.
Database Link:	<a href="#">Q6UX65</a>
Background:	Plays a role in the initiation of autophagy. In the retina, might be involved in the process of photoreceptor cells renewal and recycling to preserve visual function. Induces apoptotic cell death when coexpressed with DRAM1.



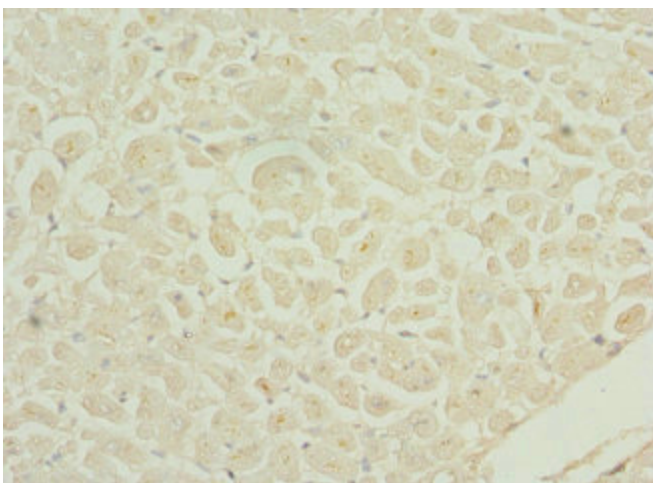
[View online »](#)

**Product images:**

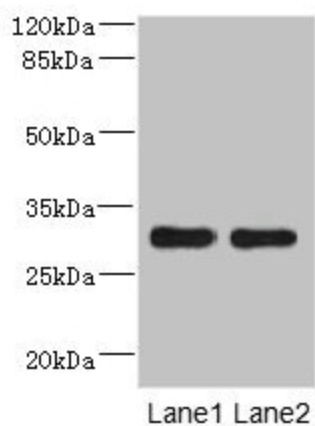
Immunohistochemistry of paraffin-embedded human bladder cancer using TA388786 at dilution of 1:100



Immunofluorescent analysis of MCF-7 cells using TA388786 at dilution of 1:100 and Alexa Fluor 488-conjugated AffiniPure Goat Anti-Rabbit IgG(H+L)



Immunohistochemistry of paraffin-embedded human heart tissue using TA388786 at dilution of 1:100



Western blot  
All lanes: DRAM2 antibody at 3.84 $\mu$ g/ml  
Lane 1: Mouse heart tissue  
Lane 2: Mouse liver tissue  
Secondary  
Goat polyclonal to rabbit IgG at 1/10000 dilution  
Predicted band size: 30 kDa  
Observed band size: 30 kDa