

## Product datasheet for **TA388779**

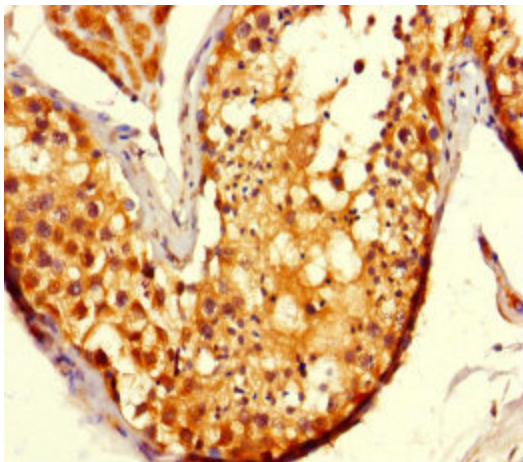
### Adck2 Rabbit Polyclonal Antibody

#### Product data:

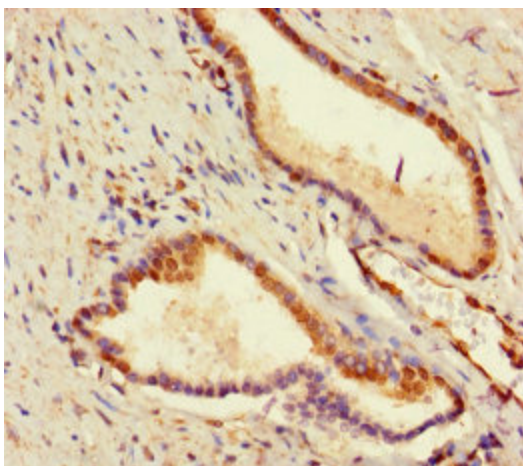
Product Type:	Primary Antibodies
Applications:	IHC, WB
Recommended Dilution:	Recommended dilution: WB:1:1000-1:5000, IHC:1:20-1:200
Reactivity:	Mouse, Human
Host:	Rabbit
Isotype:	IgG
Clonality:	Polyclonal
Immunogen:	Recombinant Mouse Uncharacterized aarF domain-containing protein kinase 2 protein (200-609AA)
Formulation:	Preservative: 0.03% Proclin 300 Constituents: 50% Glycerol, 0.01M PBS, PH 7.4
Concentration:	lot specific
Purification:	>95%, Protein G purified
Conjugation:	Unconjugated
Storage:	Upon receipt, store at -20°C or -80°C. Avoid repeated freeze.
Stability:	1 year from dispatch.
Database Link:	<a href="#">Q6NSR3</a>
Background:	The function of this protein is not yet clear. It is not known if it has protein kinase activity and what type of substrate it would phosphorylate (Ser, Thr or Tyr).



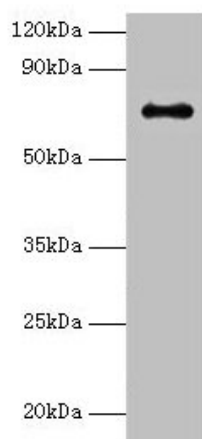
[View online »](#)

**Product images:**

Immunohistochemistry of paraffin-embedded human testis tissue using TA388779 at dilution of 1:100



Immunohistochemistry of paraffin-embedded human prostate cancer using TA388779 at dilution of 1:100



Western blot

All lanes: Adck2 antibody at 2 $\mu$ g/ml + K562 whole cell lysate

Secondary

Goat polyclonal to rabbit IgG at 1/15000 dilution

Predicted band size: 69 kDa

Observed band size: 69 kDa