

## Product datasheet for **TA388778M**

### GRAMD4 Rabbit Polyclonal Antibody

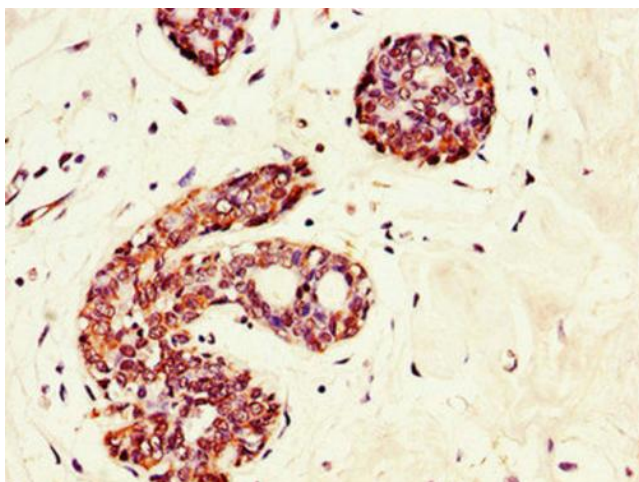
#### Product data:

Product Type:	Primary Antibodies
Applications:	IHC, WB
Recommended Dilution:	Recommended dilution: WB:1:500-1:5000, IHC:1:20-1:200
Reactivity:	Mouse, Human
Host:	Rabbit
Isotype:	IgG
Clonality:	Polyclonal
Immunogen:	Recombinant Human GRAM domain-containing protein 4 protein (23-161AA)
Formulation:	Preservative: 0.03% Proclin 300 Constituents: 50% Glycerol, 0.01M PBS, PH 7.4
Concentration:	lot specific
Purification:	>95%, Protein G purified
Conjugation:	Unconjugated
Storage:	Upon receipt, store at -20°C or -80°C. Avoid repeated freeze.
Stability:	1 year from dispatch.
Database Link:	<a href="#">Q6IC98</a>
Background:	Plays a role as a mediator of E2F1-induced apoptosis in the absence of p53/TP53.

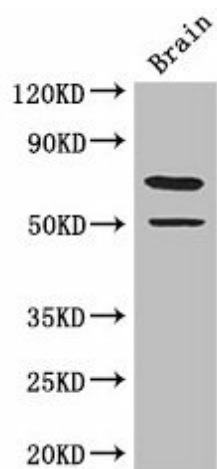


[View online »](#)

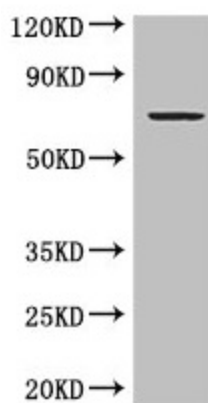
## Product images:



Immunohistochemistry of paraffin-embedded human breast cancer using [TA388778] at dilution of 1:100



Western Blot  
Positive WB detected in: Mouse brain tissue  
All lanes: GRAMD4 antibody at 3.4µg/ml  
Secondary  
Goat polyclonal to rabbit IgG at 1/50000 dilution  
Predicted band size: 67, 11 kDa  
Observed band size: 67 kDa



#### Western Blot

Positive WB detected in: MCF-7 whole cell lysate

All lanes: GRAMD4 antibody at 5µg/ml

Secondary

Goat polyclonal to rabbit IgG at 1/50000 dilution

Predicted band size: 67, 11 kDa

Observed band size: 67 kDa