

## Product datasheet for **TA388774**

### **ZNF626 Rabbit Polyclonal Antibody**

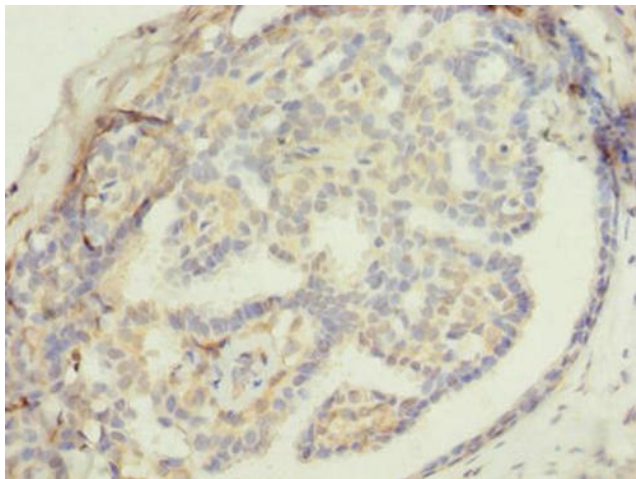
#### **Product data:**

Product Type:	Primary Antibodies
Applications:	IHC, WB
Recommended Dilution:	Recommended dilution: WB:1:500-1:2000, IHC:1:20-1:200
Reactivity:	Human
Host:	Rabbit
Isotype:	IgG
Clonality:	Polyclonal
Immunogen:	Recombinant Human Zinc finger protein 626 protein (1-92AA)
Formulation:	Preservative: 0.03% Proclin 300 Constituents: 50% Glycerol, 0.01M PBS, PH 7.4
Concentration:	lot specific
Purification:	>95%, Protein G purified
Conjugation:	Unconjugated
Storage:	Upon receipt, store at -20°C or -80°C. Avoid repeated freeze.
Stability:	1 year from dispatch.
Database Link:	<a href="#">Q68DY1</a>
Background:	May be involved in transcriptional regulation.

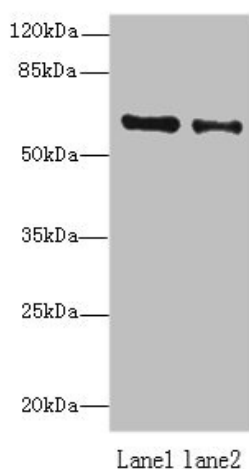


[View online »](#)

## Product images:



Immunohistochemistry of paraffin-embedded human breast cancer using TA388774 at dilution of 1:100



Western blot  
All lanes: ZNF626 antibody at 10 $\mu$ g/ml  
Lane 1: HepG2 whole cell lysate  
Lane 2: Raji whole cell lysate  
Secondary  
Goat polyclonal to rabbit IgG at 1/10000 dilution  
Predicted band size: 61, 53, 11 kDa  
Observed band size: 61 kDa