

## Product datasheet for **TA388770**

### **SHE Rabbit Polyclonal Antibody**

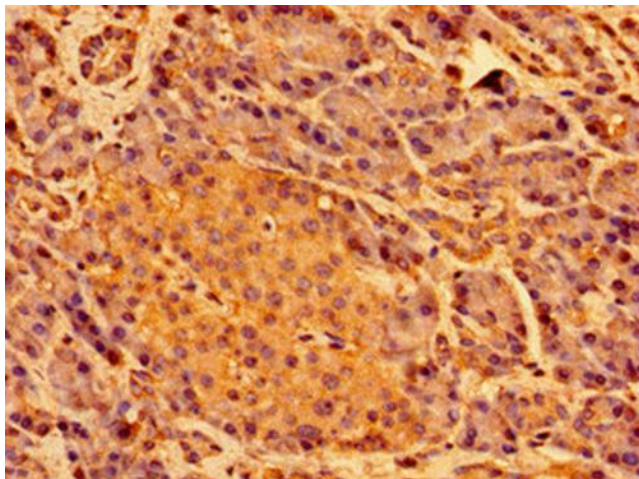
#### **Product data:**

Product Type:	Primary Antibodies
Applications:	IHC, WB
Recommended Dilution:	Recommended dilution: WB:1:500-1:5000, IHC:1:20-1:200
Reactivity:	Mouse, Rat, Human
Host:	Rabbit
Isotype:	IgG
Clonality:	Polyclonal
Immunogen:	Recombinant Human SH2 domain-containing adapter protein E protein (2-162AA)
Formulation:	Preservative: 0.03% Proclin 300 Constituents: 50% Glycerol, 0.01M PBS, pH 7.4
Concentration:	lot specific
Purification:	>95%, Protein G purified
Conjugation:	Unconjugated
Storage:	Upon receipt, store at -20°C or -80°C. Avoid repeated freeze.
Stability:	1 year from dispatch.
Database Link:	<a href="#">Q5VZ18</a>
Background:	SH3/SH2 adaptor activity, signal transduction

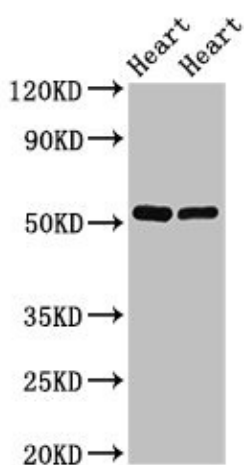


[View online »](#)

## Product images:



Immunohistochemistry of paraffin-embedded human pancreatic tissue using TA388770 at dilution of 1:100



Western Blot  
Positive WB detected in: Rat heart tissue, Mouse heart tissue  
All lanes: SHE antibody at 2.5µg/ml  
Secondary  
Goat polyclonal to rabbit IgG at 1/50000 dilution  
Predicted band size: 54 kDa  
Observed band size: 54 kDa