

## Product datasheet for **TA388765**

### gfap Rabbit Polyclonal Antibody

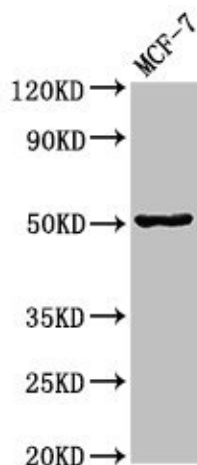
#### Product data:

Product Type:	Primary Antibodies
Applications:	WB
Recommended Dilution:	Recommended dilution: WB:1:500-1:5000
Reactivity:	Zebrafish, Human
Host:	Rabbit
Isotype:	IgG
Clonality:	Polyclonal
Immunogen:	Recombinant Zebrafish Glial fibrillary acidic protein (1-444AA)
Formulation:	Preservative: 0.03% Proclin 300 Constituents: 50% Glycerol, 0.01M PBS, pH 7.4
Concentration:	lot specific
Purification:	>95%, Protein G purified
Conjugation:	Unconjugated
Storage:	Upon receipt, store at -20°C or -80°C. Avoid repeated freeze.
Stability:	1 year from dispatch.
Database Link:	<a href="#">Q58EE9</a>
Background:	cytoplasm, type III intermediate filament



[View online »](#)

## Product images:



Western Blot

Positive WB detected in: MCF-7 whole cell lysate

All lanes: GFAP antibody at 3.4 $\mu$ g/ml

Secondary

Goat polyclonal to rabbit IgG at 1/50000 dilution

Predicted band size: 50, 51 kDa

Observed band size: 50 kDa