

Product datasheet for **TA388761**

GFOD2 Rabbit Polyclonal Antibody

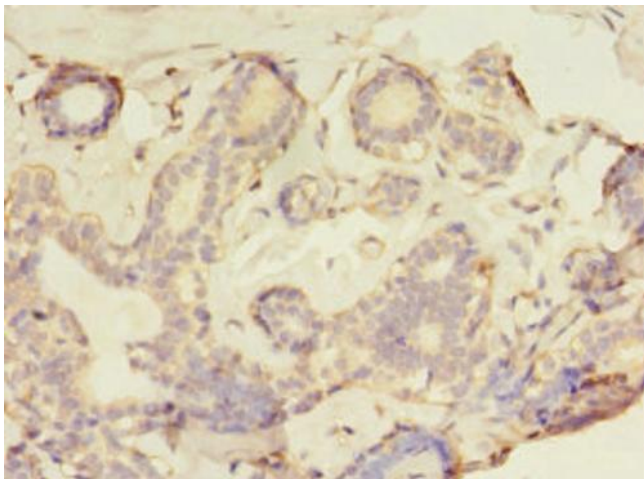
Product data:

Product Type:	Primary Antibodies
Applications:	IHC, WB
Recommended Dilution:	Recommended dilution: WB:1:500-1:5000, IHC:1:20-1:200
Reactivity:	Human
Host:	Rabbit
Isotype:	IgG
Clonality:	Polyclonal
Immunogen:	Recombinant Human Glucose-fructose oxidoreductase domain-containing protein 2 protein (1-280AA)
Formulation:	Preservative: 0.03% Proclin 300 Constituents: 50% Glycerol, 0.01M PBS, PH 7.4
Concentration:	lot specific
Purification:	Antigen Affinity Purified
Conjugation:	Unconjugated
Storage:	Upon receipt, store at -20°C or -80°C. Avoid repeated freeze.
Stability:	1 year from dispatch.
Database Link:	Q3B7J2
Background:	Promotes matrix assembly.



[View online »](#)

Product images:



Immunohistochemistry of paraffin-embedded human breast cancer using TA388761 at dilution of 1:100



Western blot
All lanes: GFOD2 antibody at 2 μ g/ml
Lane 1: K562 whole cell lysate
Lane 2: Hela whole cell lysate
Secondary
Goat polyclonal to rabbit IgG at 1/10000 dilution
Predicted band size: 43, 31, 13 kDa
Observed band size: 43 kDa