

## Product datasheet for **TA388758M**

### HLA-B Rabbit Polyclonal Antibody

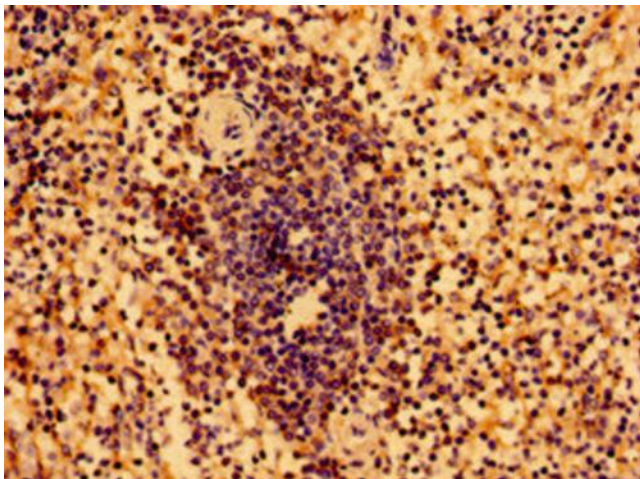
#### Product data:

Product Type:	Primary Antibodies
Applications:	IHC, WB
Recommended Dilution:	Recommended dilution: WB:1:500-1:5000, IHC:1:20-1:200
Reactivity:	Human
Host:	Rabbit
Isotype:	IgG
Clonality:	Polyclonal
Immunogen:	Recombinant Human HLA class I histocompatibility antigen, B-2 alpha chain protein (197-306AA)
Formulation:	Preservative: 0.03% Proclin 300 Constituents: 50% Glycerol, 0.01M PBS, pH 7.4
Concentration:	lot specific
Purification:	>95%, Protein G purified
Conjugation:	Unconjugated
Storage:	Upon receipt, store at -20°C or -80°C. Avoid repeated freeze.
Stability:	1 year from dispatch.
Database Link:	<a href="#">Q29718</a>
Background:	Involved in the presentation of foreign antigens to the immune system.

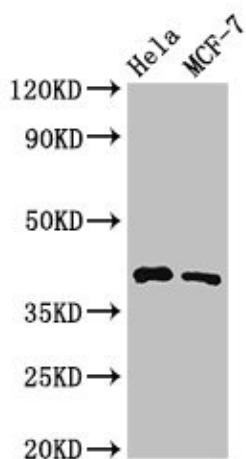


[View online »](#)

## Product images:



Immunohistochemistry of paraffin-embedded human spleen tissue using [TA388758] at dilution of 1:100



Western Blot  
Positive WB detected in: HeLa whole cell lysate, MCF-7 whole cell lysate  
All lanes: HLA-B antibody at 3.2µg/ml  
Secondary  
Goat polyclonal to rabbit IgG at 1/50000 dilution  
Predicted band size: 41 kDa  
Observed band size: 41 kDa