

Product datasheet for **TA388758**

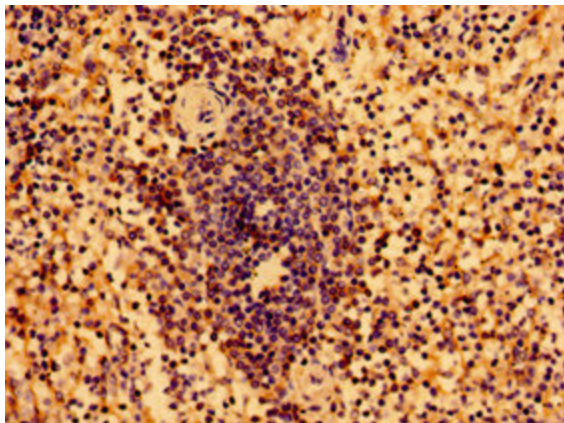
HLA-B Rabbit Polyclonal Antibody

Product data:

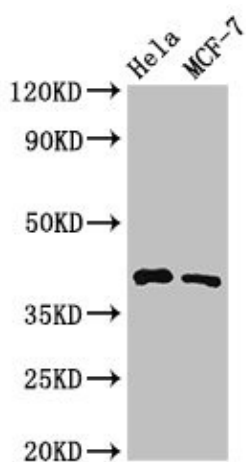
Product Type:	Primary Antibodies
Applications:	IHC, WB
Recommended Dilution:	Recommended dilution: WB:1:500-1:5000, IHC:1:20-1:200
Reactivity:	Human
Host:	Rabbit
Isotype:	IgG
Clonality:	Polyclonal
Immunogen:	Recombinant Human HLA class I histocompatibility antigen, B-2 alpha chain protein (197-306AA)
Formulation:	Preservative: 0.03% Proclin 300 Constituents: 50% Glycerol, 0.01M PBS, pH 7.4
Concentration:	lot specific
Purification:	>95%, Protein G purified
Conjugation:	Unconjugated
Storage:	Upon receipt, store at -20°C or -80°C. Avoid repeated freeze.
Stability:	1 year from dispatch.
Database Link:	Q29718
Background:	Involved in the presentation of foreign antigens to the immune system.



[View online »](#)

Product images:

Immunohistochemistry of paraffin-embedded human spleen tissue using TA388758 at dilution of 1:100



Western Blot
Positive WB detected in: HeLa whole cell lysate, MCF-7 whole cell lysate
All lanes: HLA-B antibody at 3.2 μ g/ml
Secondary
Goat polyclonal to rabbit IgG at 1/50000 dilution
Predicted band size: 41 kDa
Observed band size: 41 kDa