

## Product datasheet for **TA388755M**

### ALX1 Rabbit Polyclonal Antibody

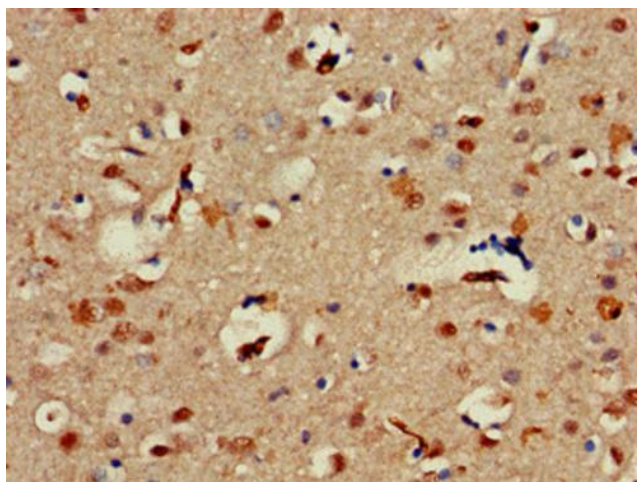
#### Product data:

Product Type:	Primary Antibodies
Applications:	IHC, WB
Recommended Dilution:	Recommended dilution: WB:1:500-1:5000, IHC:1:20-1:200
Reactivity:	Human
Host:	Rabbit
Isotype:	IgG
Clonality:	Polyclonal
Immunogen:	Recombinant Human ALX homeobox protein 1 protein (10-304AA)
Formulation:	Preservative: 0.03% Proclin 300 Constituents: 50% Glycerol, 0.01M PBS, pH 7.4
Concentration:	lot specific
Purification:	>95%, Protein G purified
Conjugation:	Unconjugated
Storage:	Upon receipt, store at -20°C or -80°C. Avoid repeated freeze.
Stability:	1 year from dispatch.
Database Link:	<a href="#">Q15699</a>
Background:	Sequence-specific DNA-binding transcription factor that binds palindromic sequences within promoters and may activate or repress the transcription of a subset of genes (PubMed:9753625, PubMed:8756334). Most probably regulates the expression of genes involved in the development of mesenchyme-derived craniofacial structures. Early on in development, it plays a role in forebrain mesenchyme survival (PubMed:20451171). May also induce epithelial to mesenchymal transition (EMT) through the expression of SNAI1 (PubMed:23288509).

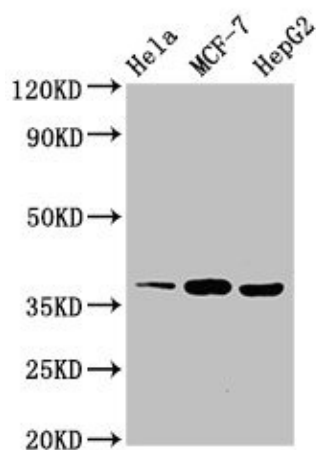


[View online »](#)

## Product images:



Immunohistochemistry of paraffin-embedded human brain tissue using [TA388755] at dilution of 1:100



### Western Blot

Positive WB detected in: HeLa whole cell lysate, MCF-7 whole cell lysate, HepG2 whole cell lysate  
All lanes: ALX1 antibody at 3µg/ml

### Secondary

Goat polyclonal to rabbit IgG at 1/50000 dilution  
Predicted band size: 37 kDa  
Observed band size: 37 kDa