

Product datasheet for **TA388747M**

SLC35A2 Rabbit Polyclonal Antibody

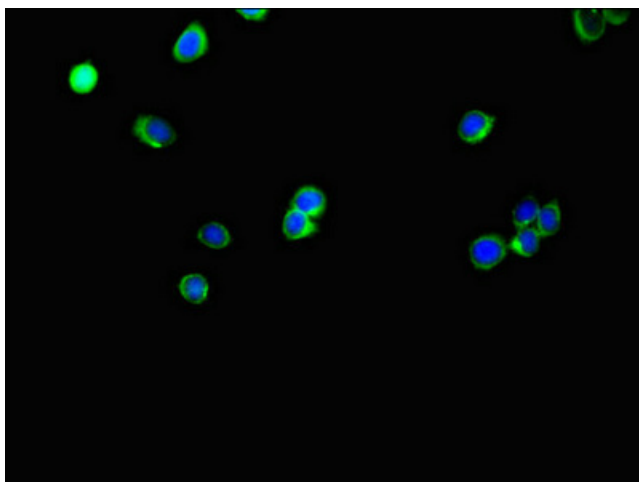
Product data:

Product Type:	Primary Antibodies
Applications:	IF, WB
Recommended Dilution:	Recommended dilution: WB:1:2000-1:5000, IF:1:50-1:200
Reactivity:	Mouse, Human
Host:	Rabbit
Isotype:	IgG
Clonality:	Polyclonal
Immunogen:	Recombinant Human UDP-galactose translocator protein (136-234AA)
Formulation:	Preservative: 0.03% Proclin 300 Constituents: 50% Glycerol, 0.01M PBS, PH 7.4
Concentration:	lot specific
Purification:	>95%, Protein G purified
Conjugation:	Unconjugated
Storage:	Upon receipt, store at -20°C or -80°C. Avoid repeated freeze.
Stability:	1 year from dispatch.
Database Link:	P78381
Background:	Transports nucleotide sugars from the cytosol into Golgi vesicles where glycosyltransferases function.

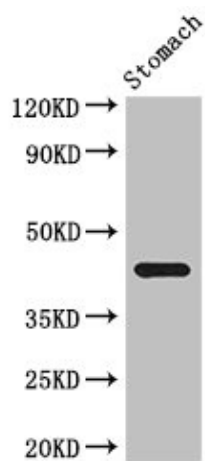


[View online »](#)

Product images:



Immunofluorescent analysis of HepG2 cells using [TA388747] at dilution of 1:100 and Alexa Fluor 488-conjugated AffiniPure Goat Anti-Rabbit IgG(H+L)



Western Blot
Positive WB detected in: Mouse stomach tissue
All lanes: SLC35A2 antibody at 3.4µg/ml
Secondary
Goat polyclonal to rabbit IgG at 1/50000 dilution
Predicted band size: 42, 26, 45, 35 kDa
Observed band size: 42 kDa