

## Product datasheet for **TA388739M**

### CLDN20 Rabbit Polyclonal Antibody

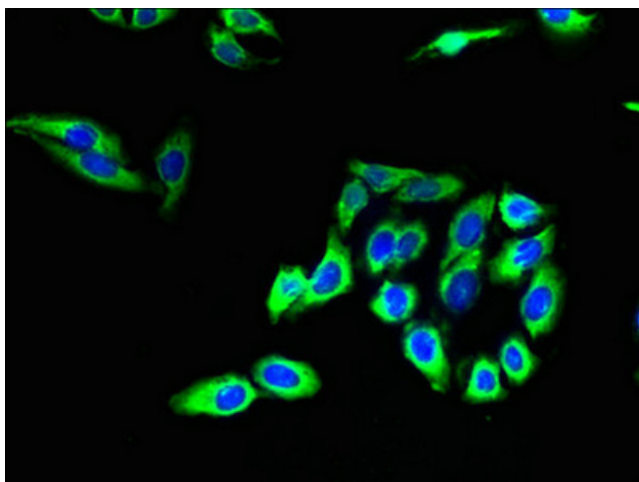
#### Product data:

Product Type:	Primary Antibodies
Applications:	IF, WB
Recommended Dilution:	Recommended dilution: WB:1:1000-1:5000, IF:1:50-1:200
Reactivity:	Human
Host:	Rabbit
Isotype:	IgG
Clonality:	Polyclonal
Immunogen:	Recombinant Human Claudin-20 protein (29-81AA)
Formulation:	Preservative: 0.03% Proclin 300 Constituents: 50% Glycerol, 0.01M PBS, PH 7.4
Concentration:	lot specific
Purification:	>95%, Protein G purified
Conjugation:	Unconjugated
Storage:	Upon receipt, store at -20°C or -80°C. Avoid repeated freeze.
Stability:	1 year from dispatch.
Database Link:	<a href="#">P56880</a>
Background:	Plays a major role in tight junction-specific obliteration of the intercellular space, through calcium-independent cell-adhesion activity.

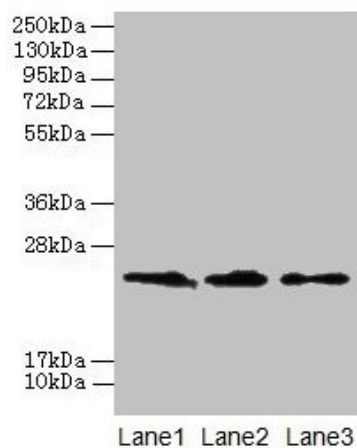


[View online »](#)

## Product images:



Immunofluorescent analysis of HepG2 cells using [TA388739] at dilution of 1:100 and Alexa Fluor 488-conjugated AffiniPure Goat Anti-Rabbit IgG(H+L)



Western blot  
 All lanes: CLDN20 antibody at 4μg/ml  
 Lane 1: A549 whole cell lysate  
 Lane 2: HepG2 whole cell lysate  
 Lane 3: PC-3 whole cell lysate  
 Secondary  
 Goat polyclonal to rabbit IgG at 1/10000 dilution  
 Predicted band size: 24 kDa  
 Observed band size: 24 kDa