

## Product datasheet for **TA388734M**

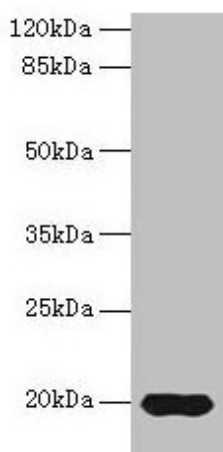
### Reg3g Rabbit Polyclonal Antibody

#### Product data:

|                       |  |
|-----------------------|--|
| Product Type:         | Primary Antibodies   |
| Applications:         | WB   |
| Recommended Dilution: | Recommended dilution: WB:1:1000-1:5000   |
| Reactivity:           | Rat, Mouse   |
| Host:                 | Rabbit   |
| Isotype:              | IgG  |
| Clonality:            | Polyclonal   |
| Immunogen:            | Recombinant Rat Regenerating islet-derived protein 3-gamma protein (27-174AA)  |
| Formulation:          | Preservative: 0.03% Proclin 300<br>Constituents: 50% Glycerol, 0.01M PBS, PH 7.4   |
| Concentration:        | lot specific   |
| Purification:         | >95%, Protein G purified   |
| Conjugation:          | Unconjugated   |
| Storage:              | Upon receipt, store at -20°C or -80°C. Avoid repeated freeze.  |
| Stability:            | 1 year from dispatch.  |
| Database Link:        | <a href="#">P42854</a>   |
| Background:           | Bactericidal C-type lectin which acts exclusively against Gram-positive bacteria and mediates bacterial killing by binding to surface-exposed carbohydrate moieties of peptidoglycan. Restricts bacterial colonization of the intestinal epithelial surface and consequently limits activation of adaptive immune responses by the microbiota. The uncleaved form has bacteriostatic activity, whereas the cleaved form has bactericidal activity against <i>L.monocytogenes</i> and methicillin-resistant <i>S.aureus</i> . Regulates keratinocyte proliferation and differentiation after skin injury (By similarity). |



[View online »](#)

**Product images:**

Western blot

All lanes: Reg3g antibody at 14µg/ml + Mouse kidney tissue

Secondary

Goat polyclonal to rabbit IgG at 1/10000 dilution

Predicted band size: 20 kDa

Observed band size: 20 kDa