

## Product datasheet for **TA388730M**

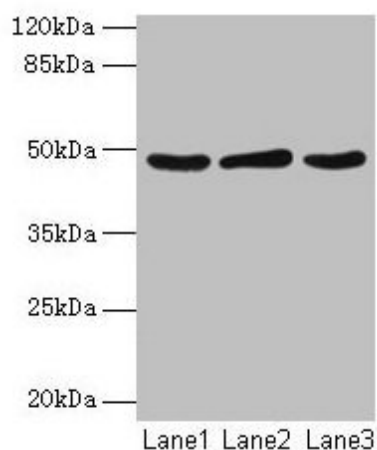
### Serpinb2 Rabbit Polyclonal Antibody

#### Product data:

Product Type:	Primary Antibodies
Applications:	WB
Recommended Dilution:	Recommended dilution: WB:1:1000-1:5000
Reactivity:	Rat, Human
Host:	Rabbit
Isotype:	IgG
Clonality:	Polyclonal
Immunogen:	Recombinant Rat Plasminogen activator inhibitor 2 type A protein (1-416AA)
Formulation:	Preservative: 0.03% Proclin 300 Constituents: 50% Glycerol, 0.01M PBS, PH 7.4
Concentration:	lot specific
Purification:	>95%, Protein G purified
Conjugation:	Unconjugated
Storage:	Upon receipt, store at -20°C or -80°C. Avoid repeated freeze.
Stability:	1 year from dispatch.
Database Link:	<a href="#">P29524</a>
Background:	Inhibits urokinase-type plasminogen activator.



[View online »](#)

**Product images:**

## Western blot

All lanes: Serpinb2 antibody at 2 $\mu$ g/ml

Lane 1: MCF-7 whole cell lysate

Lane 2: 293T whole cell lysate

Lane 3: Rat liver tissue

## Secondary

Goat polyclonal to rabbit IgG at 1/10000 dilution

Predicted band size: 48 kDa

Observed band size: 48 kDa