

## Product datasheet for **TA388727**

### Amh Rabbit Polyclonal Antibody

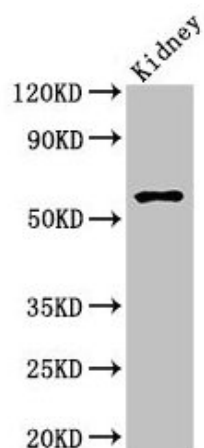
#### Product data:

Product Type:	Primary Antibodies
Applications:	IHC, WB
Recommended Dilution:	Recommended dilution: WB:1:500-1:5000, IHC:1:10-1:100
Reactivity:	Mouse, Human
Host:	Rabbit
Isotype:	IgG
Clonality:	Polyclonal
Immunogen:	Recombinant Mouse Mullerian-inhibiting factor protein (450-552AA)
Formulation:	Preservative: 0.03% Proclin 300 Constituents: 50% Glycerol, 0.01M PBS, PH 7.4
Concentration:	lot specific
Purification:	>95%, Protein G purified
Conjugation:	Unconjugated
Storage:	Upon receipt, store at -20°C or -80°C. Avoid repeated freeze.
Stability:	1 year from dispatch.
Database Link:	<a href="#">P27106</a>
Background:	This glycoprotein, produced by the Sertoli cells of the testis, causes regression of the Mullerian duct. It is also able to inhibit the growth of tumors derived from tissues of Mullerian duct origin.



[View online »](#)

## Product images:



## Western Blot

Positive WB detected in: Mouse kidney tissue

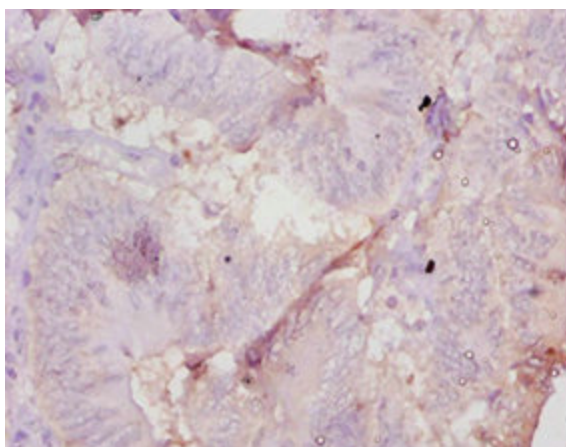
All lanes: Amh antibody at 2.7 $\mu$ g/ml

Secondary

Goat polyclonal to rabbit IgG at 1/50000 dilution

Predicted band size: 60 kDa

Observed band size: 60 kDa



Immunohistochemistry of paraffin-embedded human colon cancer using TA388727 at dilution of 1:10