

Product datasheet for **TA388722**

Hpx Rabbit Polyclonal Antibody

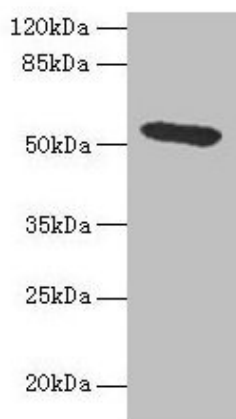
Product data:

Product Type:	Primary Antibodies
Applications:	WB
Recommended Dilution:	Recommended dilution: WB:1:1000-1:5000
Reactivity:	Rat, Human
Host:	Rabbit
Isotype:	IgG
Clonality:	Polyclonal
Immunogen:	Recombinant Rat Hemopexin protein (24-460AA)
Formulation:	Preservative: 0.03% Proclin 300 Constituents: 50% Glycerol, 0.01M PBS, PH 7.4
Concentration:	lot specific
Purification:	>95%, Protein G purified
Conjugation:	Unconjugated
Storage:	Upon receipt, store at -20°C or -80°C. Avoid repeated freeze.
Stability:	1 year from dispatch.
Database Link:	P20059
Background:	Binds heme and transports it to the liver for breakdown and iron recovery, after which the free hemopexin returns to the circulation.



[View online »](#)

Product images:



Western blot
All lanes: Hpx antibody at 4.5 μ g/ml + HepG2
whole cell lysate
Secondary
Goat polyclonal to rabbit IgG at 1/10000 dilution
Predicted band size: 52 kDa
Observed band size: 52 kDa