

Product datasheet for **TA388714M**

Anxa1 Rabbit Polyclonal Antibody

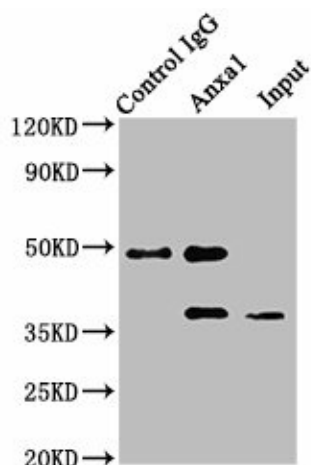
Product data:

Product Type:	Primary Antibodies
Applications:	IP, WB
Recommended Dilution:	Recommended dilution: WB:1:1000-1:5000, IP:1:200-1:2000
Reactivity:	Mouse, Human
Host:	Rabbit
Isotype:	IgG
Clonality:	Polyclonal
Immunogen:	Recombinant Mouse Annexin A1 protein (2-346AA)
Formulation:	Preservative: 0.03% Proclin 300 Constituents: 50% Glycerol, 0.01M PBS, PH 7.4
Concentration:	lot specific
Purification:	>95%, Protein G purified
Conjugation:	Unconjugated
Storage:	Upon receipt, store at -20°C or -80°C. Avoid repeated freeze.
Stability:	1 year from dispatch.
Database Link:	P10107
Background:	Calcium/phospholipid-binding protein which promotes membrane fusion and is involved in exocytosis. This protein regulates phospholipase A2 activity. It seems to bind from two to four calcium ions with high affinity.



[View online »](#)

Product images:

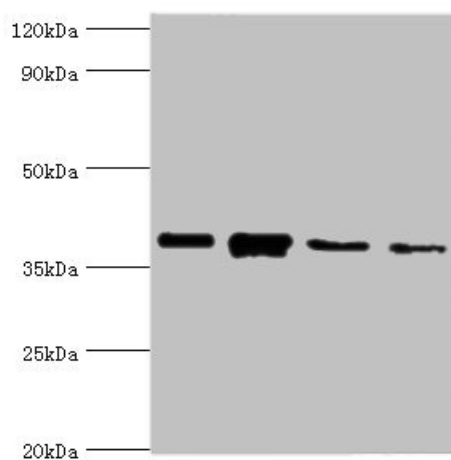


Immunoprecipitating Anxa1 in NIH/3T3 whole cell lysate

Lane 1: Rabbit control IgG instead of [TA388714] in NIH/3T3 whole cell lysate. For western blotting, a HRP-conjugated Protein G antibody was used as the secondary antibody (1/2000)

Lane 2: [TA388714] (8μg) + NIH/3T3 whole cell lysate (500μg)

Lane 3: NIH/3T3 whole cell lysate (20μg)



Western blot

All lanes: Anxa1 antibody at 2μg/ml

Lane 1: PC-3 whole cell lysate

Lane 2: A431 whole cell lysate

Lane 3: K562 whole cell lysate

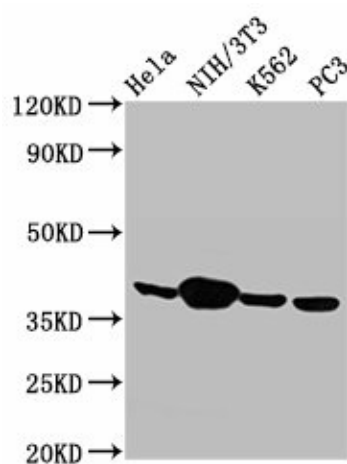
Lane 4: MCF-7 whole cell lysate

Secondary

Goat polyclonal to rabbit IgG at 1/10000 dilution

Predicted band size: 39 kDa

Observed band size: 39 kDa



Western Blot

Positive WB detected in: HeLa whole cell lysate, NIH/3T3 whole cell lysate, K562 whole cell lysate, PC-3 whole cell lysate

All lanes: Anxa1 antibody at 2.9µg/ml

Secondary

Goat polyclonal to rabbit IgG at 1/50000 dilution

Predicted band size: 39 kDa

Observed band size: 39 kDa