

## Product datasheet for **TA388706**

### Sod1 Rabbit Polyclonal Antibody

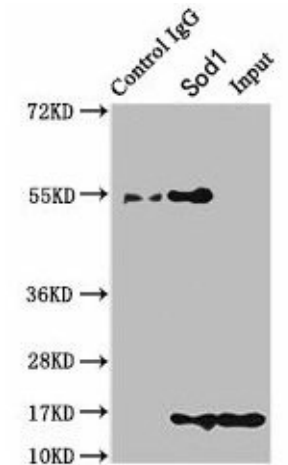
#### Product data:

Product Type:	Primary Antibodies
Applications:	IHC, IP, WB
Recommended Dilution:	Recommended dilution: WB:1:500-1:5000, IHC:1:10-1:100, IP:1:200-1:2000
Reactivity:	Mouse, Rat, Human
Host:	Rabbit
Isotype:	IgG
Clonality:	Polyclonal
Immunogen:	Recombinant Mouse Superoxide dismutase [Cu-Zn] protein (2-154AA)
Formulation:	Preservative: 0.03% Proclin 300 Constituents: 50% Glycerol, 0.01M PBS, PH 7.4
Concentration:	lot specific
Purification:	>95%, Protein G purified
Conjugation:	Unconjugated
Storage:	Upon receipt, store at -20°C or -80°C. Avoid repeated freeze.
Stability:	1 year from dispatch.
Database Link:	<a href="#">P08228</a>
Background:	Destroys radicals which are normally produced within the cells and which are toxic to biological systems.

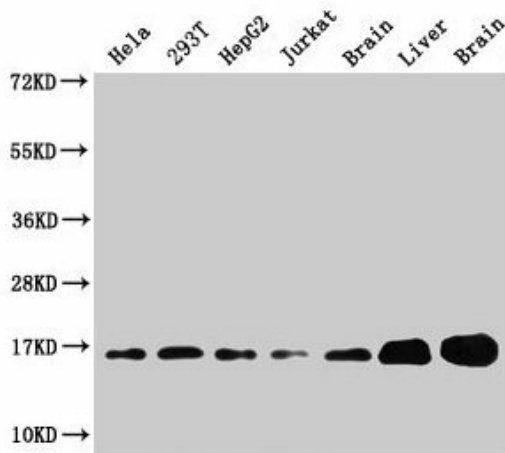


[View online »](#)

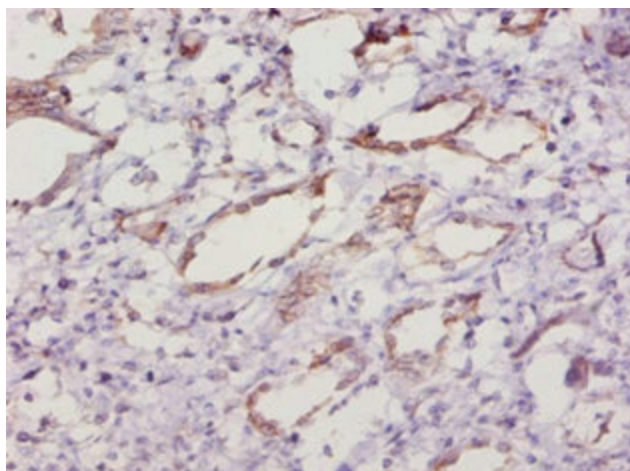
Product images:



Immunoprecipitating Sod1 in HEK293 whole cell lysate  
 Lane 1: Rabbit control IgG instead of TA388706 in HEK293 whole cell lysate. For western blotting, a HRP-conjugated Protein G antibody was used as the secondary antibody (1/2000)  
 Lane 2: TA388706 (8µg) + HEK293 whole cell lysate (500µg)  
 Lane 3: HEK293 whole cell lysate (10µg)



Western Blot  
 Positive WB detected in: HeLa whole cell lysate, 293T whole cell lysate, HepG2 whole cell lysate, Jurkat whole cell lysate, Rat brain tissue, Rat liver tissue, Mouse brain tissue  
 All lanes: Sod1 antibody at 3µg/ml  
 Secondary  
 Goat polyclonal to rabbit IgG at 1/50000 dilution  
 Predicted band size: 16 kDa  
 Observed band size: 16 kDa



Immunohistochemistry of paraffin-embedded human kidney tissue using TA388706 at dilution of 1:10