

## Product datasheet for **TA388705**

### NS1 Rabbit Polyclonal Antibody

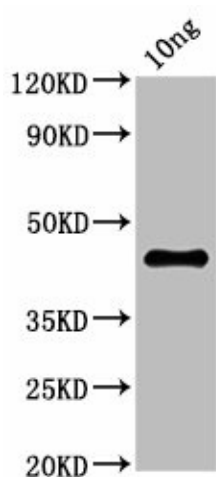
#### Product data:

Product Type:	Primary Antibodies
Applications:	WB
Recommended Dilution:	Recommended dilution: WB:1:500-1:5000
Reactivity:	Parvovirus B19, Human
Host:	Rabbit
Isotype:	IgG
Clonality:	Polyclonal
Immunogen:	Recombinant Human parvovirus B19 Non-capsid protein NS-1 protein (1-255AA)
Formulation:	Preservative: 0.03% Proclin 300 Constituents: 50% Glycerol, 0.01M PBS, pH 7.4
Concentration:	lot specific
Purification:	>95%, Protein G purified
Conjugation:	Unconjugated
Storage:	Upon receipt, store at -20°C or -80°C. Avoid repeated freeze.
Stability:	1 year from dispatch.
Database Link:	<a href="#">P07298</a>
Background:	Seems necessary for viral DNA replication.



[View online »](#)

## Product images:



Western Blot  
Positive WB detected in Recombinant protein  
All lanes: NS1 antibody at 2.7 $\mu$ g/ml  
Secondary  
Goat polyclonal to rabbit IgG at 1/50000 dilution  
Predicted band size: 45 kDa  
Observed band size: 45 kDa