

Product datasheet for **TA388704**

vpx Rabbit Polyclonal Antibody

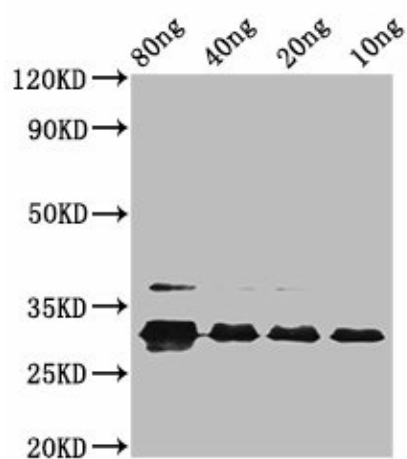
Product data:

Product Type:	Primary Antibodies
Applications:	WB
Recommended Dilution:	Recommended dilution: WB:1:500-1:5000
Reactivity:	Human Immunodeficiency Virus 2, Human
Host:	Rabbit
Isotype:	IgG
Clonality:	Polyclonal
Immunogen:	Recombinant Human immunodeficiency virus type 2 subtype A Protein Vpx protein (1-112AA)
Formulation:	Preservative: 0.03% Proclin 300 Constituents: 50% Glycerol, 0.01M PBS, pH 7.4
Concentration:	lot specific
Purification:	>95%, Protein G purified
Conjugation:	Unconjugated
Storage:	Upon receipt, store at -20°C or -80°C. Avoid repeated freeze.
Stability:	1 year from dispatch.
Database Link:	P06939
Background:	Plays a role in nuclear translocation of the viral pre-integration complex (PIC), thus is required for the virus to infect non-dividing cells. Targets specific host proteins for degradation by the 26S proteasome. Acts by associating with the cellular CUL4A-DDB1 E3 ligase complex through direct interaction with host VPRPB/DCAF-1. This change in the E3 ligase substrate specificity results in the degradation of host SAMHD1. In turn, SAMHD1 depletion allows viral replication in host myeloid cells by preventing SAMHD1-mediated hydrolysis of intracellular dNTPs necessary for reverse transcription (By similarity).



[View online »](#)

Product images:



Western Blot

Positive WB detected in Recombinant protein

All lanes: vpx at 2.6 μ g/ml

Secondary

Goat polyclonal to rabbit IgG at 1/50000 dilution

Predicted band size: 32 kDa

Observed band size: 32 kDa