

Product datasheet for **TA388691M**

HLA-C Rabbit Polyclonal Antibody

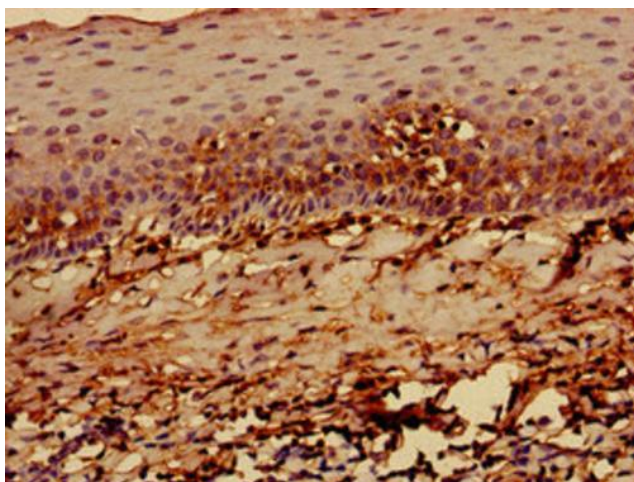
Product data:

Product Type:	Primary Antibodies
Applications:	IF, IHC, WB
Recommended Dilution:	Recommended dilution: WB:1:500-1:5000, IHC:1:20-1:200, IF:1:50-1:200
Reactivity:	Human
Host:	Rabbit
Isotype:	IgG
Clonality:	Polyclonal
Immunogen:	Recombinant Human HLA-C protein (25-308AA)
Formulation:	Preservative: 0.03% Proclin 300 Constituents: 50% Glycerol, 0.01M PBS, PH 7.4
Concentration:	lot specific
Purification:	>95%, Protein G purified
Conjugation:	Unconjugated
Storage:	Upon receipt, store at -20°C or -80°C. Avoid repeated freeze.
Stability:	1 year from dispatch.
Database Link:	Q78179
Background:	Involved in the presentation of foreign antigens to the immune system.

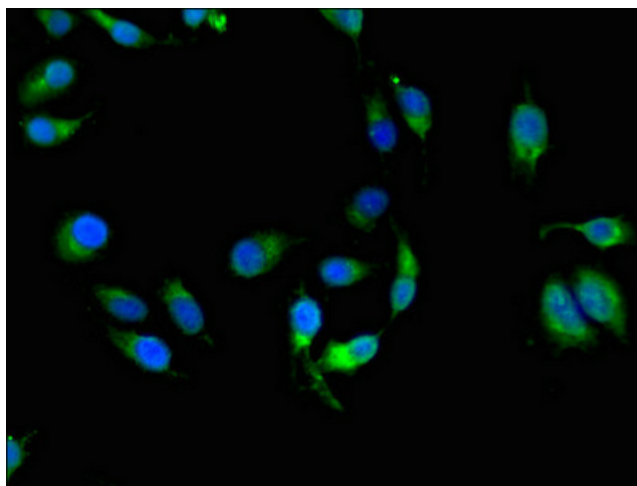


[View online »](#)

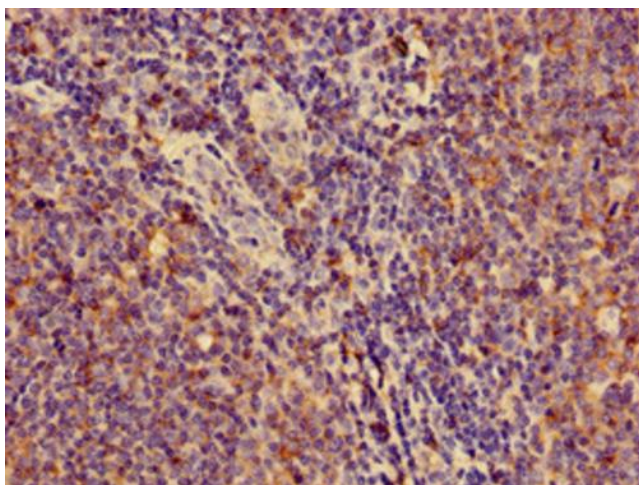
Product images:



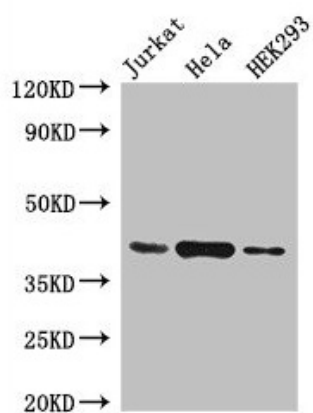
Immunohistochemistry of paraffin-embedded human tonsil tissue using [TA388691] at dilution of 1:100



Immunofluorescent analysis of Hela cells using [TA388691] at dilution of 1:100



Immunohistochemistry of paraffin-embedded human lymph node tissue using [TA388691] at dilution of 1:100



Western Blot

Positive WB detected in: Jurkat whole cell lysate, HeLa whole cell lysate, HEK293 whole cell lysate

All lanes: HLA-C antibody at 4µg/ml

Secondary

Goat polyclonal to rabbit IgG at 1/50000 dilution

Predicted band size: 41 kDa

Observed band size: 41 kDa