

Product datasheet for **TA388684**

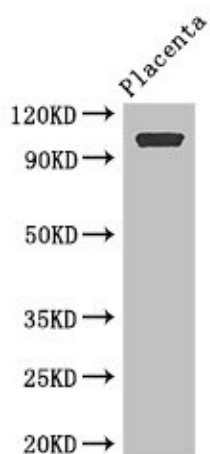
ARHGAP42 Rabbit Polyclonal Antibody

Product data:

Product Type:	Primary Antibodies
Applications:	IHC, WB
Recommended Dilution:	Recommended dilution: WB:1:2000-1:10000, IHC:1:20-1:200
Reactivity:	Human
Host:	Rabbit
Isotype:	IgG
Clonality:	Polyclonal
Immunogen:	Recombinant Human Rho GTPase-activating protein 42 protein (541-728AA)
Formulation:	Preservative: 0.03% Proclin 300 Constituents: 50% Glycerol, 0.01M PBS, PH 7.4
Concentration:	lot specific
Purification:	>95%, Protein G purified
Conjugation:	Unconjugated
Storage:	Upon receipt, store at -20°C or -80°C. Avoid repeated freeze.
Stability:	1 year from dispatch.
Database Link:	A6NI28
Background:	May influence blood pressure by functioning as a GTPase-activating protein for RHOA in vascular smooth muscle.



[View online »](#)

Product images:**Western Blot**

Positive WB detected in: Human placenta tissue

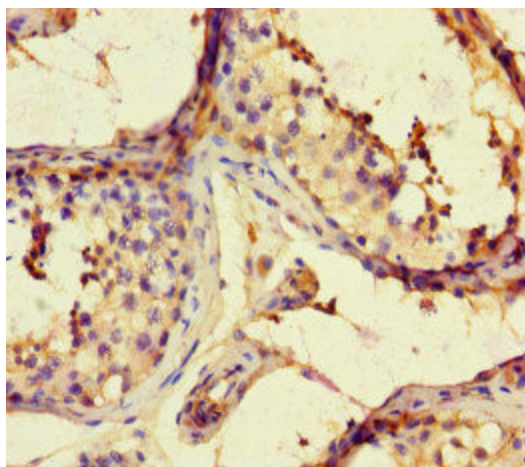
All lanes: ARHGAP42 antibody at 2.8 μ g/ml

Secondary

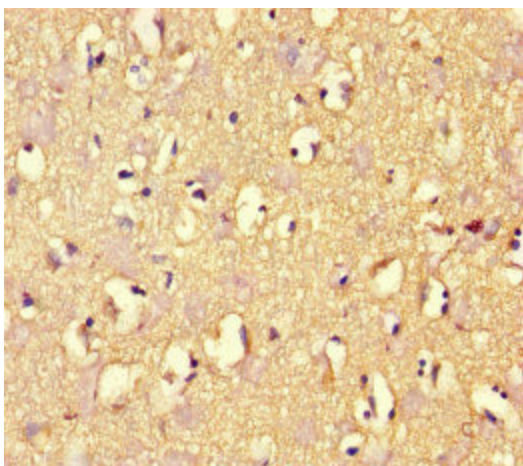
Goat polyclonal to rabbit IgG at 1/50000 dilution

Predicted band size: 99 kDa

Observed band size: 99 kDa



Immunohistochemistry of paraffin-embedded human testis tissue using TA388684 at dilution of 1:100



Immunohistochemistry of paraffin-embedded human brain tissue using TA388684 at dilution of 1:100