

## Product datasheet for **TA388683**

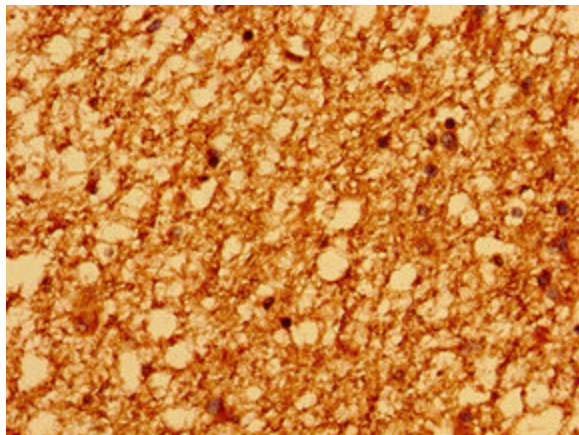
### PSD Rabbit Polyclonal Antibody

#### Product data:

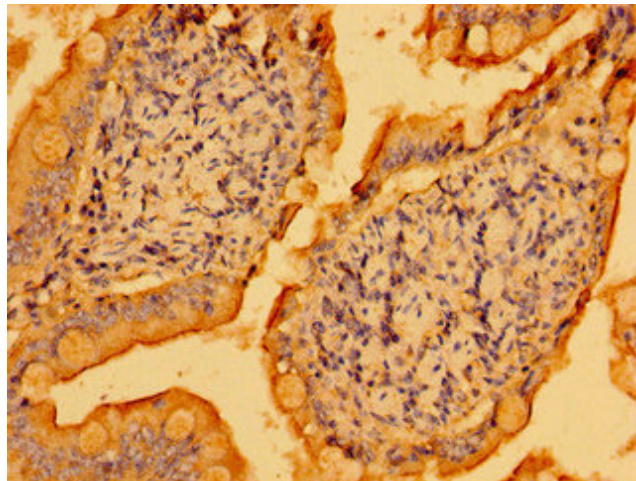
Product Type:	Primary Antibodies
Applications:	IHC, WB
Recommended Dilution:	Recommended dilution: WB:1:500-1:5000, IHC:1:20-1:200
Reactivity:	Human
Host:	Rabbit
Isotype:	IgG
Clonality:	Polyclonal
Immunogen:	Recombinant Human PH and SEC7 domain-containing protein 1 protein (247-489AA)
Formulation:	Preservative: 0.03% Proclin 300 Constituents: 50% Glycerol, 0.01M PBS, pH 7.4
Concentration:	lot specific
Purification:	>95%, Protein G purified
Conjugation:	Unconjugated
Storage:	Upon receipt, store at -20°C or -80°C. Avoid repeated freeze.
Stability:	1 year from dispatch.
Database Link:	<a href="#">A5PKW4</a>
Background:	Guanine nucleotide exchange factor for ARF6. Induces cytoskeletal remodeling (By similarity).



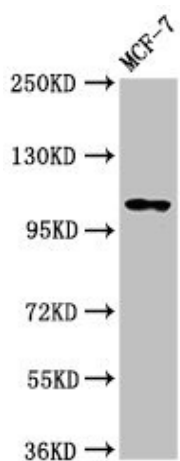
[View online »](#)

**Product images:**

Immunohistochemistry of paraffin-embedded human brain tissue using TA388683 at dilution of 1:100



Immunohistochemistry of paraffin-embedded human small intestine tissue using TA388683 at dilution of 1:100



Western Blot

Positive WB detected in: MCF-7 whole cell lysate

All lanes: PSD antibody at 3.2 $\mu$ g/ml

Secondary

Goat polyclonal to rabbit IgG at 1/50000 dilution

Predicted band size: 110, 71 kDa

Observed band size: 110 kDa