

## Product datasheet for **TA388681M**

### **FAM234B Rabbit Polyclonal Antibody**

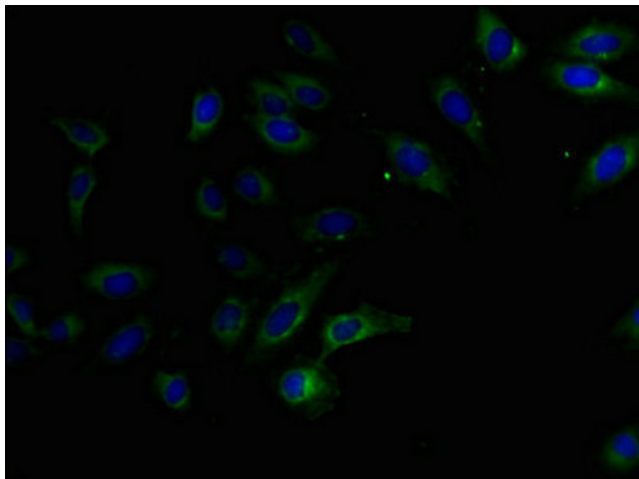
#### **Product data:**

Product Type:	Primary Antibodies
Applications:	IF, IHC, WB
Recommended Dilution:	Recommended dilution: WB:1:1000-1:5000, IHC:1:20-1:200, IF:1:50-1:200
Reactivity:	Human
Host:	Rabbit
Isotype:	IgG
Clonality:	Polyclonal
Immunogen:	Recombinant Human Protein FAM234B protein (401-622AA)
Formulation:	Preservative: 0.03% Proclin 300 Constituents: 50% Glycerol, 0.01M PBS, PH 7.4
Concentration:	lot specific
Purification:	>95%, Protein G purified
Conjugation:	Unconjugated
Storage:	Upon receipt, store at -20°C or -80°C. Avoid repeated freeze.
Stability:	1 year from dispatch.
Database Link:	<a href="#">A2RU67</a>

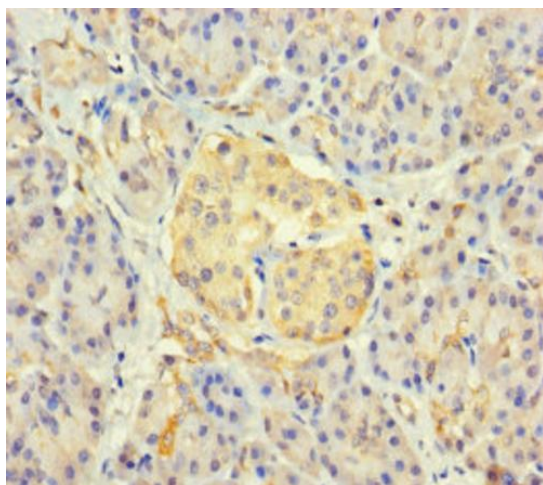


[View online »](#)

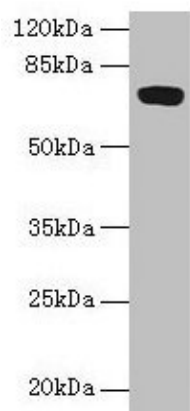
## Product images:



Immunofluorescent analysis of HeLa cells using [TA388681] at dilution of 1:100 and Alexa Fluor 488-conjugated AffiniPure Goat Anti-Rabbit IgG(H+L)



Immunohistochemistry of paraffin-embedded human pancreatic tissue using [TA388681] at dilution of 1:100



Western blot

All lanes: FAM234B antibody at 6µg/ml + Human placenta tissue

Secondary

Goat polyclonal to rabbit IgG at 1/10000 dilution

Predicted band size: 68 kDa

Observed band size: 68 kDa