

Product datasheet for **TA388675M**

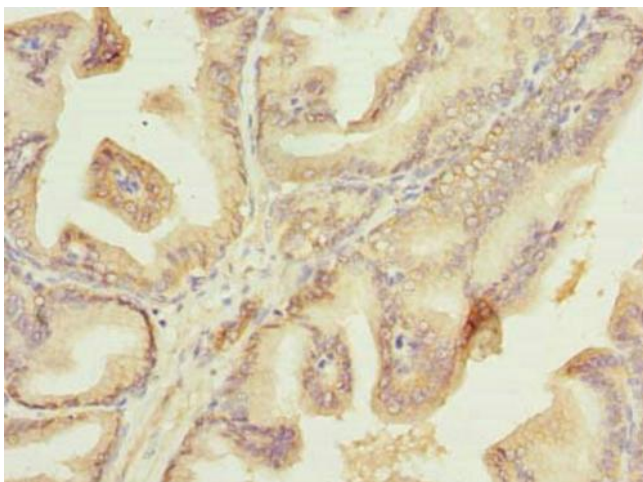
Plet1 Rabbit Polyclonal Antibody

Product data:

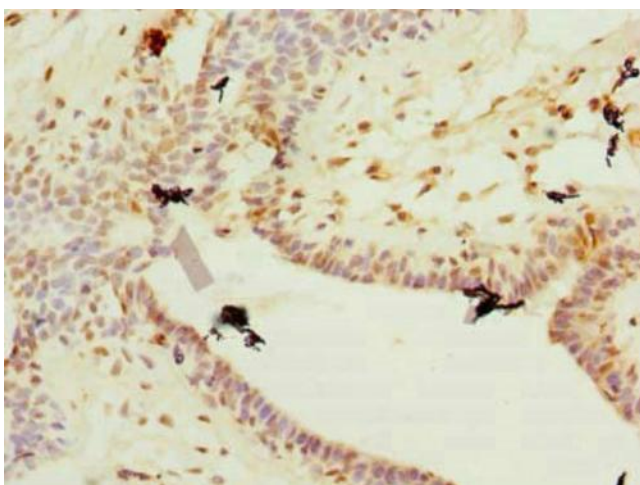
Product Type:	Primary Antibodies
Applications:	IHC, WB
Recommended Dilution:	Recommended dilution: WB:1:500-1:2000, IHC:1:20-1:200
Reactivity:	Mouse, Human
Host:	Rabbit
Isotype:	IgG
Clonality:	Polyclonal
Immunogen:	Recombinant Mouse Placenta-expressed transcript 1 protein (28-218AA)
Formulation:	Preservative: 0.03% Proclin 300 Constituents: 50% Glycerol, 0.01M PBS, PH 7.4
Concentration:	lot specific
Purification:	>95%, Protein G purified
Conjugation:	Unconjugated
Storage:	Upon receipt, store at -20°C or -80°C. Avoid repeated freeze.
Stability:	1 year from dispatch.
Database Link:	Q8VEN2
Background:	Modulates leading keratinocyte migration and cellular adhesion to matrix proteins during a wound-healing response and promotes wound repair. May play a role during trichilemmal differentiation of the hair follicle.

[View online »](#)

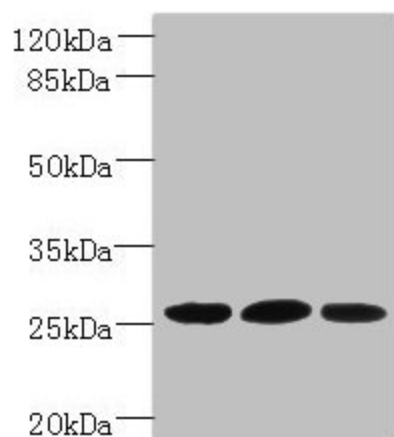
Product images:



Immunohistochemistry of paraffin-embedded human prostate cancer using [TA388675] at dilution of 1:100



Immunohistochemistry of paraffin-embedded human breast cancer using [TA388675] at dilution of 1:100



Western blot

All lanes: Plet1 antibody at 5 μ g/ml

Lane 1: L929 whole cell lysate

Lane 2: U251 whole cell lysate

Lane 3: Mouse muscle tissue

Secondary

Goat polyclonal to rabbit IgG at 1/10000 dilution

Predicted band size: 26, 21 kDa

Observed band size: 26 kDa