

## Product datasheet for **TA388674**

### Igfbp1 Rabbit Polyclonal Antibody

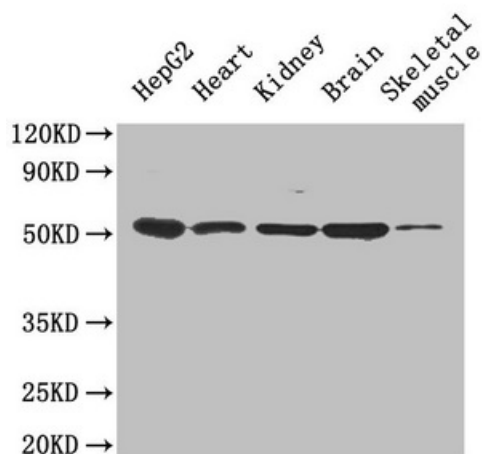
#### Product data:

Product Type:	Primary Antibodies
Applications:	WB
Recommended Dilution:	Recommended dilution: WB:1:1000-1:5000
Reactivity:	Mouse, Human
Host:	Rabbit
Isotype:	IgG
Clonality:	Polyclonal
Immunogen:	Recombinant Mouse Insulin-like growth factor-binding protein 1 protein (26-272AA)
Formulation:	Preservative: 0.03% Proclin 300 Constituents: 50% Glycerol, 0.01M PBS, PH 7.4
Concentration:	lot specific
Purification:	>95%, Protein G purified
Conjugation:	Unconjugated
Storage:	Upon receipt, store at -20°C or -80°C. Avoid repeated freeze.
Stability:	1 year from dispatch.
Database Link:	<a href="#">P47876</a>
Background:	IGF-binding proteins prolong the half-life of the IGFs and have been shown to either inhibit or stimulate the growth promoting effects of the IGFs on cell culture. They alter the interaction of IGFs with their cell surface receptors. Promotes cell migration (By similarity).



[View online »](#)

## Product images:



## Western Blot

Positive WB detected in: HepG2 whole cell lysate, Mouse heart tissue, Mouse kidney tissue, Mouse brain tissue, Mouse skeletal muscle tissue

All lanes: Igfbp1 antibody at 0.6 $\mu$ g/ml

Secondary

Goat polyclonal to rabbit IgG at 1/50000 dilution

Predicted band size: 30 kDa

Observed band size: 50 kDa