

Product datasheet for **TA388669**

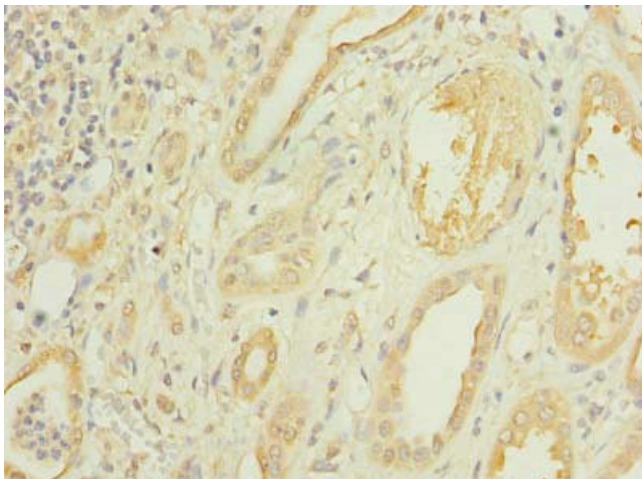
CMBL Rabbit Polyclonal Antibody

Product data:

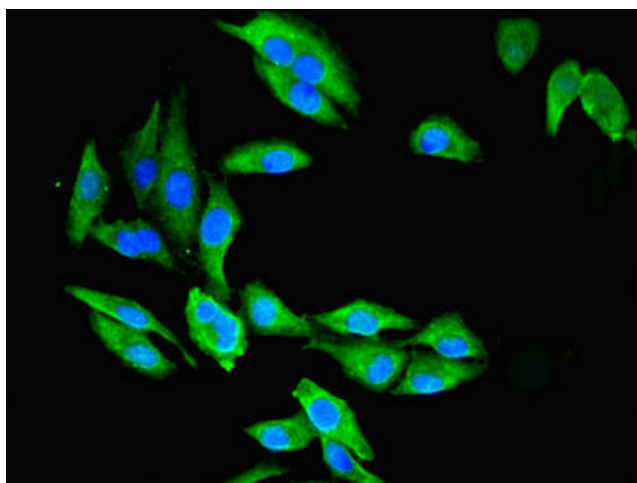
Product Type:	Primary Antibodies
Applications:	IF, IHC, WB
Recommended Dilution:	Recommended dilution: WB:1:500-1:2000, IHC:1:20-1:200, IF:1:50-1:200
Reactivity:	Mouse, Human
Host:	Rabbit
Isotype:	IgG
Clonality:	Polyclonal
Immunogen:	Recombinant Human Carboxymethylenebutenolidase homolog protein (2-245AA)
Formulation:	Preservative: 0.03% Proclin 300 Constituents: 50% Glycerol, 0.01M PBS, PH 7.4
Concentration:	lot specific
Purification:	>95%, Protein G purified
Conjugation:	Unconjugated
Storage:	Upon receipt, store at -20°C or -80°C. Avoid repeated freeze.
Stability:	1 year from dispatch.
Database Link:	Q96DG6
Background:	Cysteine hydrolase. Can convert the prodrug olmesartan medoxomil into its pharmacologically active metabolite olmerstatan, an angiotensin receptor blocker, in liver and intestine. May also activate beta-lactam antibiotics faropenem medoxomil and lenampicillin.



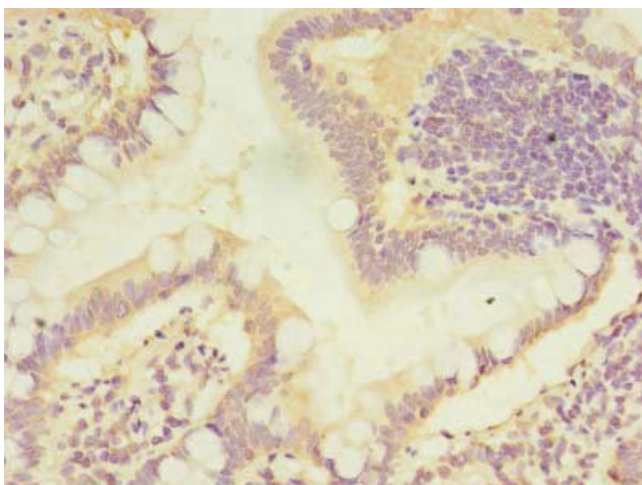
[View online »](#)

Product images:

Immunohistochemistry of paraffin-embedded human kidney tissue using TA388669 at dilution of 1:100



Immunofluorescent analysis of HeLa cells using TA388669 at dilution of 1:100 and Alexa Fluor 488-conjugated AffiniPure Goat Anti-Rabbit IgG(H+L)



Immunohistochemistry of paraffin-embedded human small intestine tissue using TA388669 at dilution of 1:100



Western blot
All lanes: CMBL antibody at 1 μ g/ml
Lane 1: Mouse kidney tissue
Lane 2: Mouse liver tissue
Secondary
Goat polyclonal to rabbit IgG at 1/10000 dilution
Predicted band size: 29 kDa
Observed band size: 29, 25 kDa