

## Product datasheet for **TA388667M**

### CBS Rabbit Polyclonal Antibody

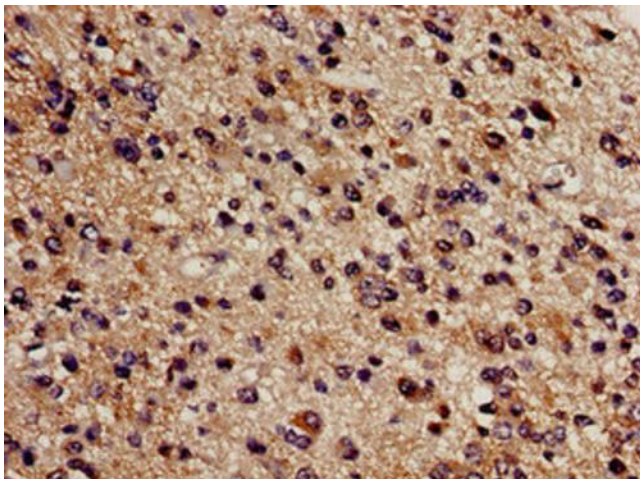
#### Product data:

Product Type:	Primary Antibodies
Applications:	IF, IHC, IP, WB
Recommended Dilution:	Recommended dilution: WB:1:500-1:5000, IHC:1:20-1:200, IF:1:50-1:200, IP:1:200-1:2000
Reactivity:	Mouse, Human
Host:	Rabbit
Isotype:	IgG
Clonality:	Polyclonal
Immunogen:	Recombinant Human Cystathionine beta-synthase protein (1-413AA)
Formulation:	Preservative: 0.03% Proclin 300 Constituents: 50% Glycerol, 0.01M PBS, pH 7.4
Concentration:	lot specific
Purification:	>95%, Protein G purified
Conjugation:	Unconjugated
Storage:	Upon receipt, store at -20°C or -80°C. Avoid repeated freeze.
Stability:	1 year from dispatch.
Database Link:	<a href="#">P35520</a>
Background:	Hydro-lyase catalyzing the first step of the transsulfuration pathway, where the hydroxyl group of L-serine is displaced by L-homocysteine in a beta-replacement reaction to form L-cystathionine, the precursor of L-cysteine. This catabolic route allows the elimination of L-methionine and the toxic metabolite L-homocysteine (PubMed:23981774, PubMed:20506325, PubMed:23974653). Also involved in the production of hydrogen sulfide, a gasotransmitter with signaling and cytoprotective effects on neurons (By similarity).

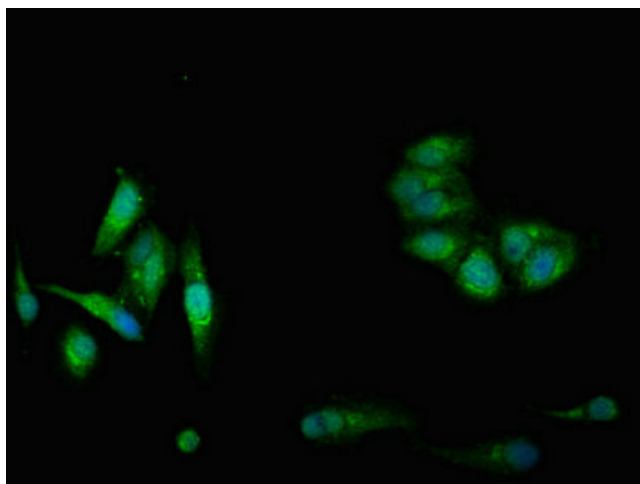


[View online »](#)

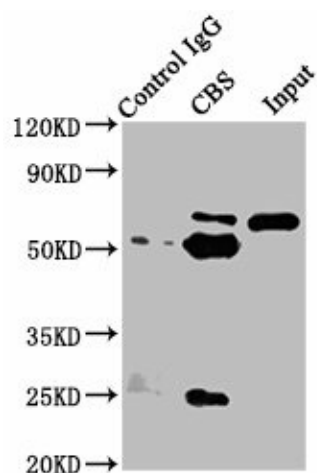
## Product images:



Immunohistochemistry analysis of human glioma using [TA388667] at dilution of 1:100



Immunofluorescent analysis of HeLa cells using [TA388667] at dilution of 1:100 and Alexa Fluor 488-conjugated AffiniPure Goat Anti-Rabbit IgG(H+L)

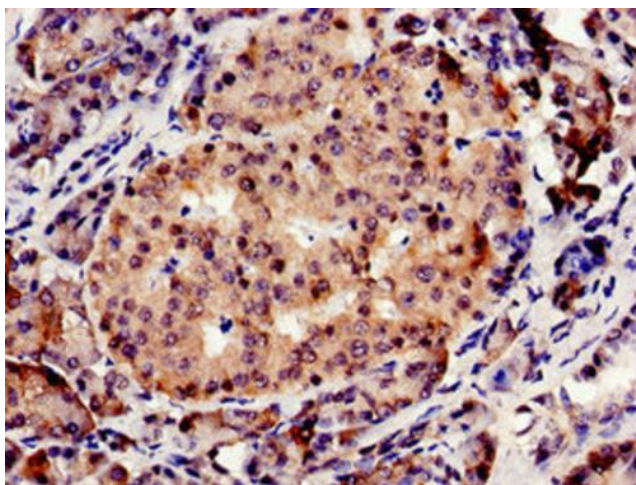


Immunoprecipitating CBS in HeLa whole cell lysate

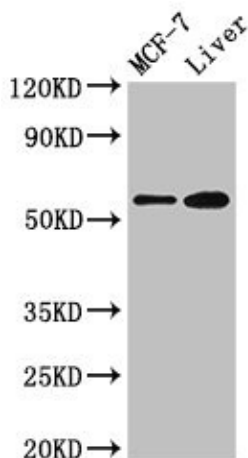
Lane 1: Rabbit control IgG instead of [TA388667] in HeLa whole cell lysate. For western blotting, a HRP-conjugated Protein G antibody was used as the secondary antibody (1/5000)

Lane 2: [TA388667] (8μg) + HeLa whole cell lysate (500μg)

Lane 3: HeLa whole cell lysate (20μg)



Immunocytochemistry analysis of human pancreatic tissue using [TA388667] at dilution of 1:100



Western Blot

Positive WB detected in: MCF-7 whole cell lysate, Mouse liver tissue

All lanes: CBS antibody at 2.7μg/ml

Secondary

Goat polyclonal to rabbit IgG at 1/50000 dilution

Predicted band size: 61, 62 kDa

Observed band size: 61 kDa