

## Product datasheet for **TA388665M**

### **C10orf82 Rabbit Polyclonal Antibody**

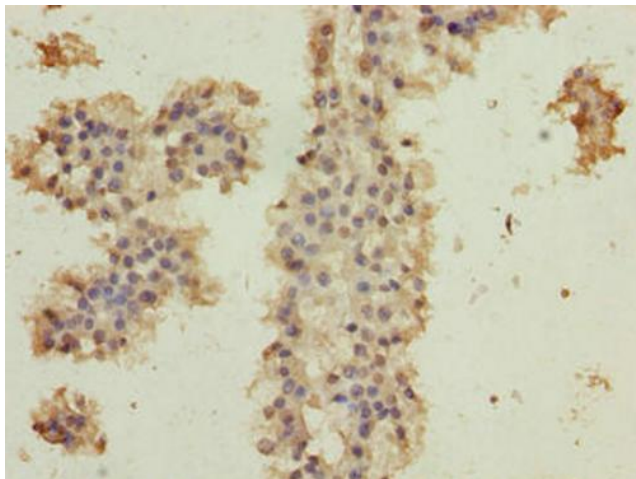
#### **Product data:**

Product Type:	Primary Antibodies
Applications:	IHC, WB
Recommended Dilution:	Recommended dilution: WB:1:1000-1:5000, IHC:1:20-1:200
Reactivity:	Mouse, Human
Host:	Rabbit
Isotype:	IgG
Clonality:	Polyclonal
Immunogen:	Recombinant Human Uncharacterized protein C10orf82 protein (1-154AA)
Formulation:	Preservative: 0.03% Proclin 300 Constituents: 50% Glycerol, 0.01M PBS, PH 7.4
Concentration:	lot specific
Purification:	Antigen Affinity Purified
Conjugation:	Unconjugated
Storage:	Upon receipt, store at -20°C or -80°C. Avoid repeated freeze.
Stability:	1 year from dispatch.
Database Link:	<a href="#">Q8WW14</a>

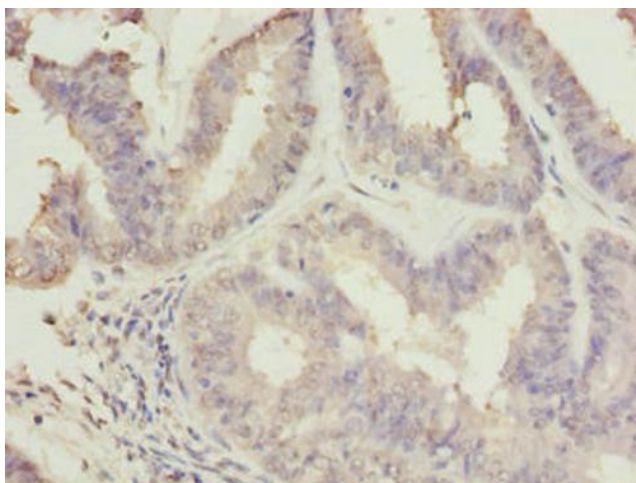


[View online »](#)

## Product images:



Immunohistochemistry of paraffin-embedded human breast cancer using [TA388665] at dilution of 1:100



Immunohistochemistry of paraffin-embedded human endometrial cancer using [TA388665] at dilution of 1:100



## Western blot

All lanes: C10orf82 antibody at 1 $\mu$ g/ml

Lane 1: A431 whole cell lysate

Lane 2: HepG2 whole cell lysate

Lane 3: Mouse thymus tissue

## Secondary

Goat polyclonal to rabbit IgG at 1/10000 dilution

Predicted band size: 27, 18, 13 kDa

Observed band size: 27 kDa