

## Product datasheet for **TA388664M**

### **KBTBD7 Rabbit Polyclonal Antibody**

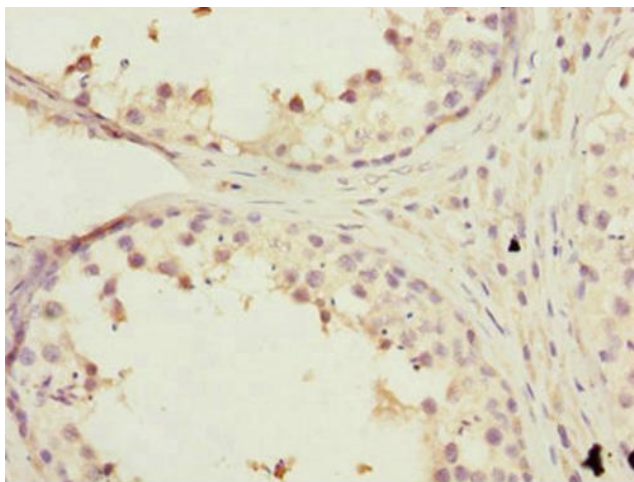
#### **Product data:**

Product Type:	Primary Antibodies
Applications:	IHC, WB
Recommended Dilution:	Recommended dilution: WB:1:1000-1:5000, IHC:1:20-1:200
Reactivity:	Human
Host:	Rabbit
Isotype:	IgG
Clonality:	Polyclonal
Immunogen:	Recombinant Human Kelch repeat and BTB domain-containing protein 7 protein (475-684AA)
Formulation:	PBS with 0.02% sodium azide, 50% glycerol, pH7.3.
Concentration:	lot specific
Purification:	Antigen Affinity Purified
Conjugation:	Unconjugated
Storage:	Upon receipt, store at -20°C or -80°C. Avoid repeated freeze.
Stability:	1 year from dispatch.
Database Link:	<a href="#"><u>Q8WVZ9</u></a>
Background:	Cul3-RING ubiquitin ligase complex, cytosol, MAPK cascade

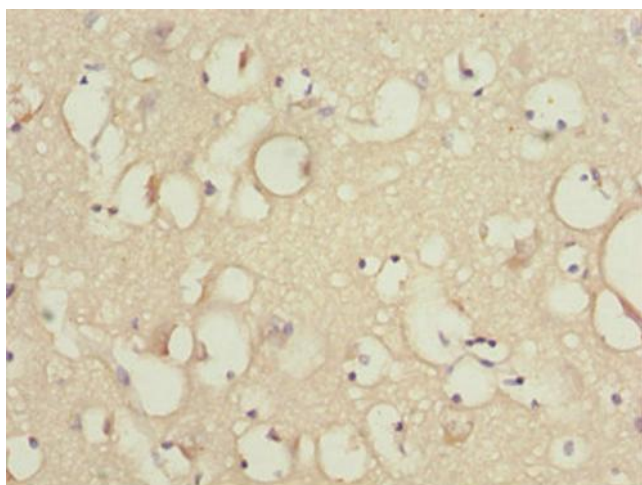


[View online »](#)

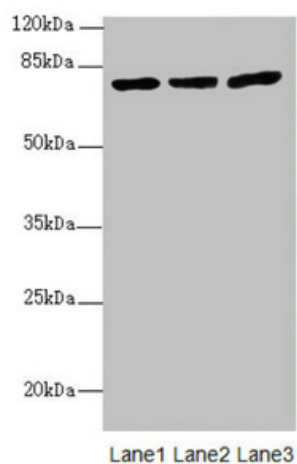
**Product images:**



Immunohistochemistry of paraffin-embedded human testis tissue using [TA388664] at dilution of 1:100



Immunohistochemistry of paraffin-embedded human brain tissue using [TA388664] at dilution of 1:100



Western blot

All lanes: KBTD7 antibody at 1.85µg/ml

Lane 1: HL60 whole cell lysate

Lane 2: A549 whole cell lysate

Lane 3: 293T whole cell lysate

Secondary

Goat polyclonal to rabbit IgG at 1/10000 dilution

Predicted band size: 77 kDa

Observed band size: 77 kDa