

Product datasheet for **TA388659**

CNKSR3 Rabbit Polyclonal Antibody

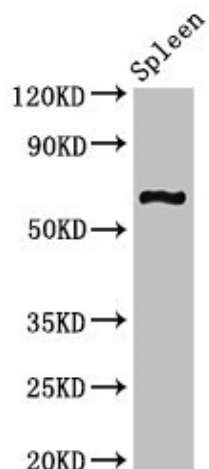
Product data:

Product Type:	Primary Antibodies
Applications:	IF, WB
Recommended Dilution:	Recommended dilution: WB:1:200-1:2000, IF:1:50-1:200
Reactivity:	Mouse, Human
Host:	Rabbit
Isotype:	IgG
Clonality:	Polyclonal
Immunogen:	Recombinant Human Connector enhancer of kinase suppressor of ras 3 protein (301-555AA)
Formulation:	Preservative: 0.03% Proclin 300 Constituents: 50% Glycerol, 0.01M PBS, pH 7.4
Concentration:	lot specific
Purification:	>95%, Protein G purified
Conjugation:	Unconjugated
Storage:	Upon receipt, store at -20°C or -80°C. Avoid repeated freeze.
Stability:	1 year from dispatch.
Database Link:	Q6P9H4
Background:	Probably involved in transepithelial sodium transport. Regulates aldosterone-induced and ENaC-mediated sodium transport possibly through regulation of the ERK pathway (By similarity).



[View online »](#)

Product images:



Western Blot

Positive WB detected in: Mouse spleen tissue

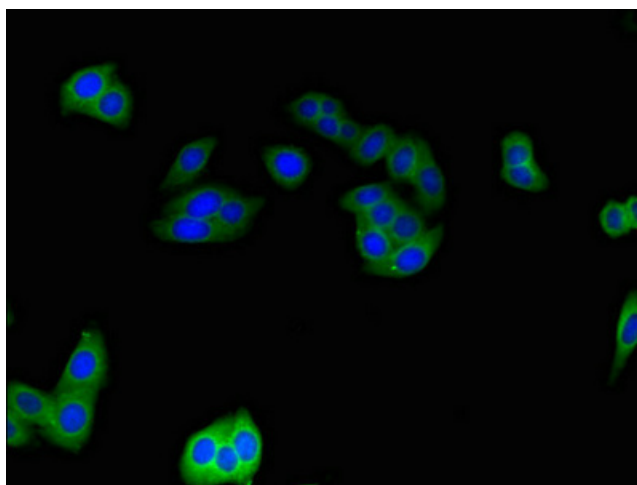
All lanes: CNKSR3 antibody at 2 μ g/ml

Secondary

Goat polyclonal to rabbit IgG at 1/50000 dilution

Predicted band size: 62, 101, 93 kDa

Observed band size: 62 kDa



Immunofluorescent analysis of HepG2 cells using TA388659 at dilution of 1:100 and Alexa Fluor 488-conjugated AffiniPure Goat Anti-Rabbit IgG(H+L)