

## Product datasheet for **TA388657M**

### PDCL3 Rabbit Polyclonal Antibody

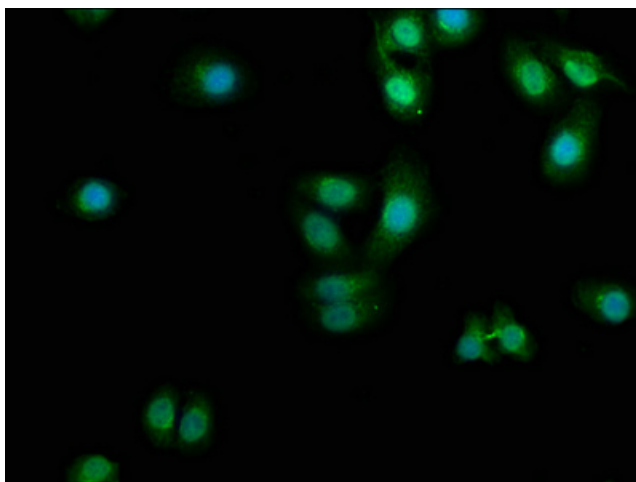
#### Product data:

Product Type:	Primary Antibodies
Applications:	IF, WB
Recommended Dilution:	Recommended dilution: WB:1:1000-1:5000, IF:1:50-1:200
Reactivity:	Human
Host:	Rabbit
Isotype:	IgG
Clonality:	Polyclonal
Immunogen:	Recombinant Human Phosducin-like protein 3 protein (1-239AA)
Formulation:	Preservative: 0.03% Proclin 300 Constituents: 50% Glycerol, 0.01M PBS, pH 7.4
Concentration:	lot specific
Purification:	>95%, Protein G purified
Conjugation:	Unconjugated
Storage:	Upon receipt, store at -20°C or -80°C. Avoid repeated freeze.
Stability:	1 year from dispatch.
Database Link:	<a href="#">Q9H2J4</a>
Background:	Acts as a chaperone for the angiogenic VEGF receptor KDR/VEGFR2, controlling its abundance and inhibiting its ubiquitination and degradation. Modulates the activation of caspases during apoptosis. Is a substrate for Orgyia pseudotsugata multicapsid polyhedrosis virus (OpMNPV) IAP-mediated ubiquitination.

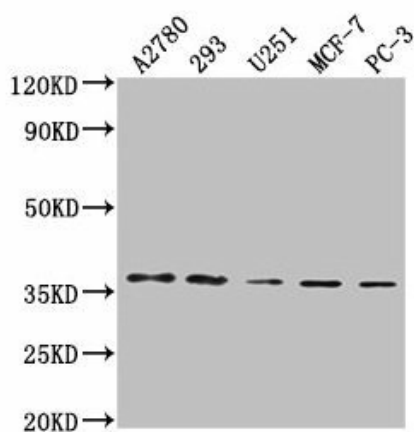


[View online »](#)

## Product images:



Immunofluorescence staining of HepG2 cells with [TA388657] at 1:100, counter-stained with DAPI. The cells were fixed in 4% formaldehyde, permeabilized using 0.2% Triton X-100 and blocked in 10% normal Goat Serum. The cells were then incubated with the antibody overnight at 4°C. The secondary antibody was Alexa Fluor 488-conjugated AffiniPure Goat Anti-Rabbit IgG(H+L).



### Western Blot

Positive WB detected in: A2780 whole cell lysate, 293 whole cell lysate, U251 whole cell lysate, MCF-7 whole cell lysate, PC-3 whole cell lysate  
All lanes: PDCL3 antibody at 1:2000

### Secondary

Goat polyclonal to rabbit IgG at 1/50000 dilution  
Predicted band size: 28 kDa  
Observed band size: 37 kDa