

## Product datasheet for **TA388656**

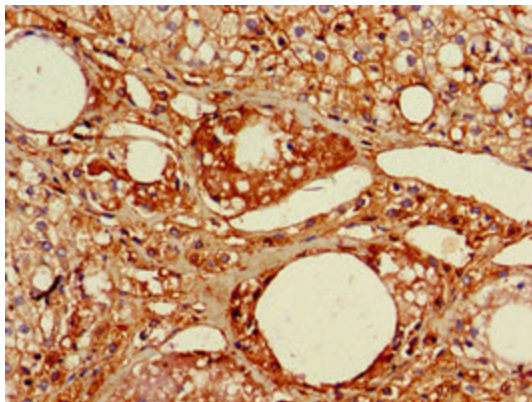
### RGL2 Rabbit Polyclonal Antibody

#### Product data:

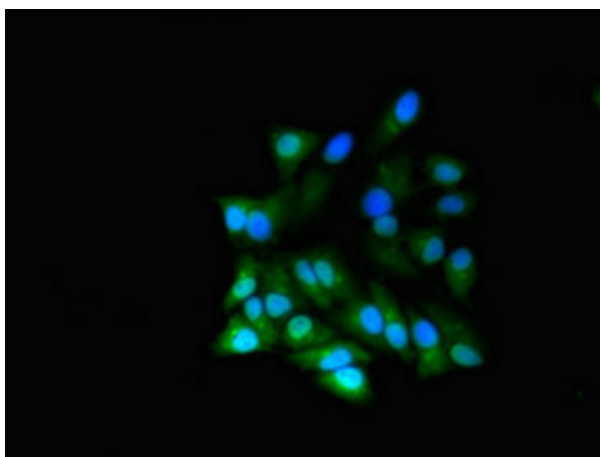
Product Type:	Primary Antibodies
Applications:	IF, IHC, WB
Recommended Dilution:	Recommended dilution: WB:1:500-1:5000, IHC:1:20-1:200, IF:1:50-1:200
Reactivity:	Mouse, Rat, Human
Host:	Rabbit
Isotype:	IgG
Clonality:	Polyclonal
Immunogen:	Recombinant Human Ral guanine nucleotide dissociation stimulator-like 2 protein (145-328AA)
Formulation:	Preservative: 0.03% Proclin 300 Constituents: 50% Glycerol, 0.01M PBS, pH 7.4
Concentration:	lot specific
Purification:	>95%, Protein G purified
Conjugation:	Unconjugated
Storage:	Upon receipt, store at -20°C or -80°C. Avoid repeated freeze.
Stability:	1 year from dispatch.
Database Link:	<a href="#">O15211</a>
Background:	Probable guanine nucleotide exchange factor. Putative effector of Ras and/or Rap. Associates with the GTP-bound form of Rap 1A and H-Ras in vitro (By similarity).



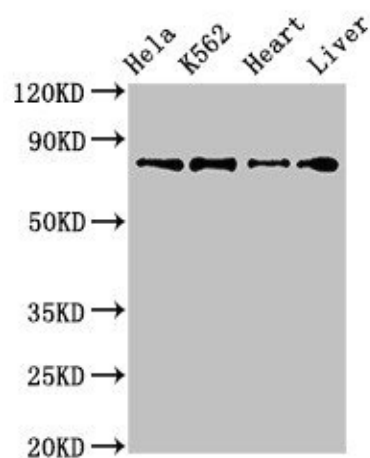
[View online »](#)

**Product images:**

Immunohistochemistry of paraffin-embedded human adrenal gland tissue using TA388656 at dilution of 1:100



Immunofluorescent analysis of HeLa cells using TA388656 at dilution of 1:100 and Alexa Fluor 488-conjugated AffiniPure Goat Anti-Rabbit IgG(H+L)



#### Western Blot

Positive WB detected in: HeLa whole cell lysate, K562 whole cell lysate, Mouse heart tissue, Rat liver tissue

All lanes: RGL2 antibody at 3.2 $\mu$ g/ml

Secondary

Goat polyclonal to rabbit IgG at 1/50000 dilution

Predicted band size: 84, 51 kDa

Observed band size: 84 kDa