

Product datasheet for **TA388655M**

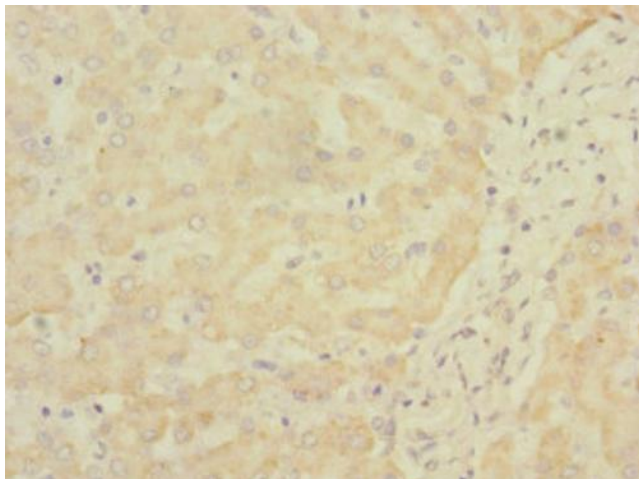
SOAT2 Rabbit Polyclonal Antibody

Product data:

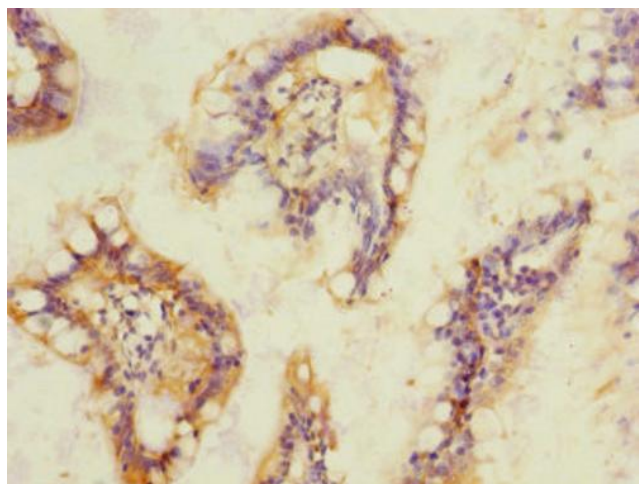
Product Type:	Primary Antibodies
Applications:	IHC, WB
Recommended Dilution:	Recommended dilution: WB:1:1000-1:5000, IHC:1:20-1:200
Reactivity:	Human
Host:	Rabbit
Isotype:	IgG
Clonality:	Polyclonal
Immunogen:	Recombinant Human Sterol O-acyltransferase 2 protein (1-120AA)
Formulation:	PBS with 0.02% sodium azide, 50% glycerol, pH7.3.
Concentration:	lot specific
Purification:	Antigen Affinity Purified
Conjugation:	Unconjugated
Storage:	Upon receipt, store at -20°C or -80°C. Avoid repeated freeze.
Stability:	1 year from dispatch.
Database Link:	O75908
Background:	Plays a role in lipoprotein assembly and dietary cholesterol absorption. In addition to its acyltransferase activity, it may act as a ligase. May provide cholesteryl esters for lipoprotein secretion from hepatocytes and intestinal mucosa.

[View online »](#)

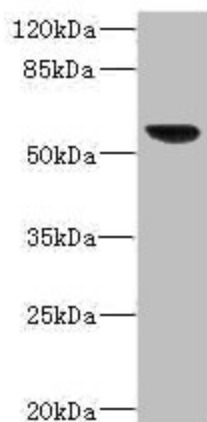
Product images:



Immunohistochemistry of paraffin-embedded human liver tissue using [TA388655] at dilution of 1:100



Immunohistochemistry of paraffin-embedded human small intestine tissue using [TA388655] at dilution of 1:100



Western blot

All lanes: SOAT2 antibody IgG at 3.36µg/ml +
293T whole cell lysate

Secondary

Goat polyclonal to rabbit IgG at 1/10000 dilution

Predicted band size: 60, 58, 51, 35 kDa

Observed band size: 60 kDa