

Product datasheet for **TA388650M**

SLC25A15 Rabbit Polyclonal Antibody

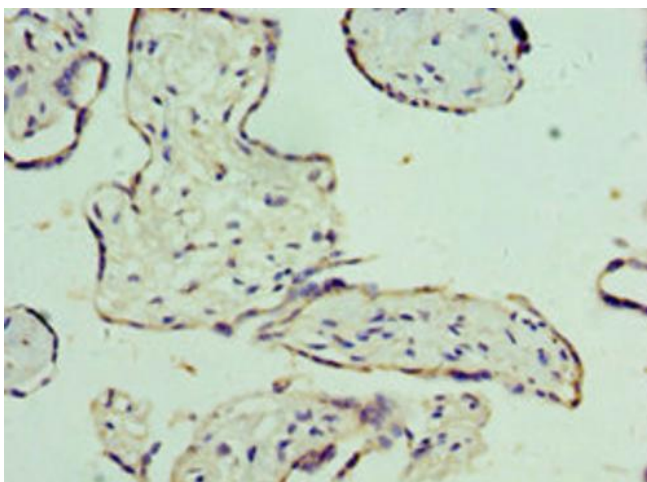
Product data:

Product Type:	Primary Antibodies
Applications:	IHC, WB
Recommended Dilution:	Recommended dilution: WB:1:500-1:2000, IHC:1:20-1:200
Reactivity:	Mouse, Human
Host:	Rabbit
Isotype:	IgG
Clonality:	Polyclonal
Immunogen:	Recombinant Human Mitochondrial ornithine transporter 1 protein (1-301AA)
Formulation:	PBS with 0.02% sodium azide, 50% glycerol, pH7.3.
Concentration:	lot specific
Purification:	Antigen Affinity Purified
Conjugation:	Unconjugated
Storage:	Upon receipt, store at -20°C or -80°C. Avoid repeated freeze.
Stability:	1 year from dispatch.
Database Link:	Q9Y619
Background:	Ornithine transport across inner mitochondrial membrane, from the cytoplasm to the matrix.

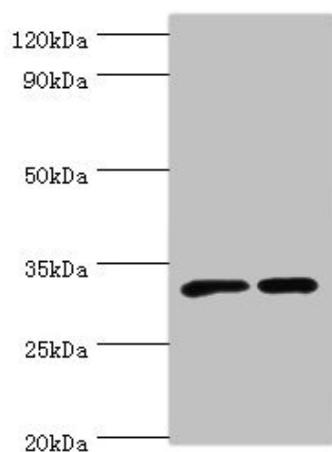


[View online »](#)

Product images:



Immunohistochemistry of paraffin-embedded human placenta tissue using [TA388650] at dilution of 1:100



Western blot
All lanes: SLC25A15 antibody at 6 μ g/ml
Lane 1: Mouse liver tissue
Lane 2: Mouse stomach tissue
Secondary
Goat polyclonal to rabbit IgG at 1/10000 dilution
Predicted band size: 33 kDa
Observed band size: 33 kDa