

Product datasheet for **TA388646**

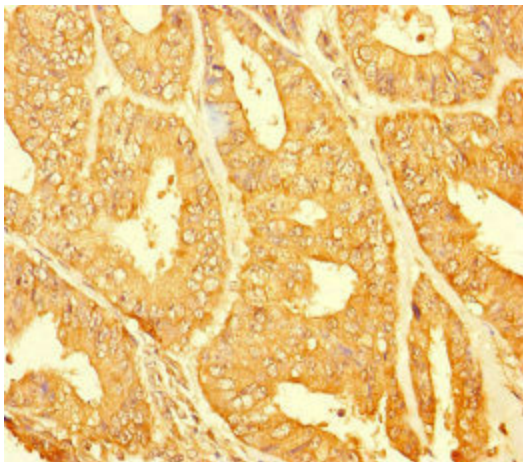
CHTOP Rabbit Polyclonal Antibody

Product data:

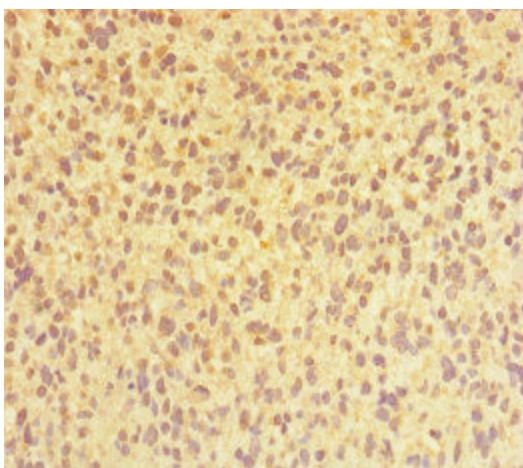
Product Type:	Primary Antibodies
Applications:	IHC, WB
Recommended Dilution:	Recommended dilution: WB:1:1000-1:5000, IHC:1:20-1:200
Reactivity:	Mouse, Human
Host:	Rabbit
Isotype:	IgG
Clonality:	Polyclonal
Immunogen:	Recombinant Human Chromatin target of PRMT1 protein (179-248AA)
Formulation:	Preservative: 0.03% Proclin 300 Constituents: 50% Glycerol, 0.01M PBS, PH 7.4
Concentration:	lot specific
Purification:	>95%, Protein G purified
Conjugation:	Unconjugated
Storage:	Upon receipt, store at -20°C or -80°C. Avoid repeated freeze.
Stability:	1 year from dispatch.
Database Link:	Q9Y3Y2
Background:	Plays an important role in the ligand-dependent activation of estrogen receptor target genes (PubMed:19858291). May play a role in the silencing of fetal globin genes (PubMed:20688955). Recruits the 5FMC complex to ZNF148, leading to desumoylation of ZNF148 and subsequent transactivation of ZNF148 target genes (By similarity). Plays an important role in the tumorigenicity of glioblastoma cells. Binds to 5-hydroxymethylcytosine (5hmC) and associates with the methylosome complex containing PRMT1, PRMT5, MEP50 and ERH. The CHTOP-methylosome complex associated with 5hmC is recruited to selective sites on the chromosome, where it methylates H4R3 and activates the transcription of genes involved in glioblastomagenesis (PubMed:25284789).



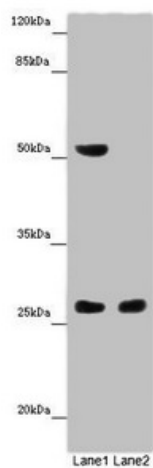
[View online »](#)

Product images:

Immunohistochemistry of paraffin-embedded human endometrial cancer using TA388646 at dilution of 1:100



Immunohistochemistry of paraffin-embedded human glioma using TA388646 at dilution of 1:100



Western blot

All lanes: CHTOP antibody at 14 $\mu\text{g/ml}$

Lane 1: Mouse heart tissue

Lane 2: Mouse kidney tissue

Secondary

Goat polyclonal to rabbit IgG at 1/10000 dilution

Predicted band size: 27, 22 kDa

Observed band size: 27, 52 kDa