

Product datasheet for **TA388640**

TRAPPC2L Rabbit Polyclonal Antibody

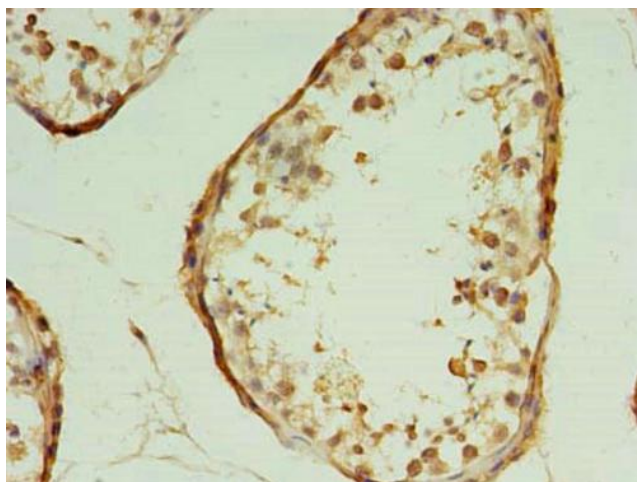
Product data:

| | |
|-----------------------|---|
| Product Type: | Primary Antibodies |
| Applications: | IHC, WB |
| Recommended Dilution: | Recommended dilution: WB:1:500-1:2000, IHC:1:20-1:200 |
| Reactivity: | Mouse, Human |
| Host: | Rabbit |
| Isotype: | IgG |
| Clonality: | Polyclonal |
| Immunogen: | Recombinant Human Trafficking protein particle complex subunit 2-like protein (1-139AA) |
| Formulation: | Preservative: 0.03% Proclin 300 Constituents: 50% Glycerol, 0.01M PBS, PH 7.4 |
| Concentration: | lot specific |
| Purification: | >95%, Protein G purified |
| Conjugation: | Unconjugated |
| Storage: | Upon receipt, store at -20°C or -80°C. Avoid repeated freeze. |
| Stability: | 1 year from dispatch. |
| Database Link: | Q9UL33 |
| Background: | May play a role in vesicular transport from endoplasmic reticulum to Golgi. |

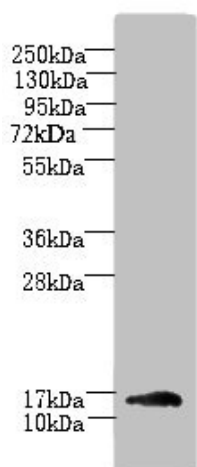


[View online »](#)

Product images:



Immunohistochemistry of paraffin-embedded human testis tissue using TA388640 at dilution of 1:100



Western blot
All lanes: TRAPPC2L antibody at 5µg/ml + Mouse kidney tissue
Secondary
Goat polyclonal to rabbit IgG at 1/10000 dilution
Predicted band size: 16 kDa
Observed band size: 16 kDa