

Product datasheet for **TA388638M**

LSM7 Rabbit Polyclonal Antibody

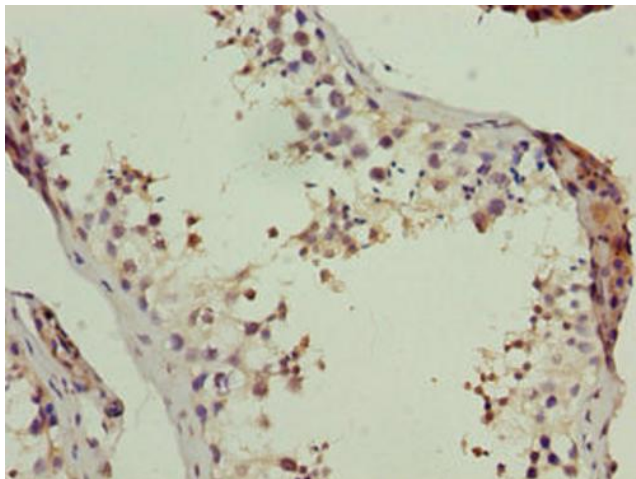
Product data:

Product Type:	Primary Antibodies
Applications:	IHC, WB
Recommended Dilution:	Recommended dilution: WB:1:1000-1:5000, IHC:1:20-1:200
Reactivity:	Human
Host:	Rabbit
Isotype:	IgG
Clonality:	Polyclonal
Immunogen:	Recombinant Human U6 snRNA-associated Sm-like protein LSM7 protein (2-103AA)
Formulation:	Preservative: 0.03% Proclin 300 Constituents: 50% Glycerol, 0.01M PBS, PH 7.4
Concentration:	lot specific
Purification:	>95%, Protein G purified
Conjugation:	Unconjugated
Storage:	Upon receipt, store at -20°C or -80°C. Avoid repeated freeze.
Stability:	1 year from dispatch.
Database Link:	Q9UK45
Background:	Binds specifically to the 3'-terminal U-tract of U6 snRNA and is probably a component of the spliceosome.



[View online »](#)

Product images:



Immunohistochemistry of paraffin-embedded human testis tissue using [TA388638] at dilution of 1:100



Western blot
All lanes: LSM7 antibody at 3µg/ml + HepG2 whole cell lysate
Secondary
Goat polyclonal to rabbit IgG at 1/10000 dilution
Predicted band size: 12 kDa
Observed band size: 12 kDa