

## Product datasheet for **TA388637M**

### NAGPA Rabbit Polyclonal Antibody

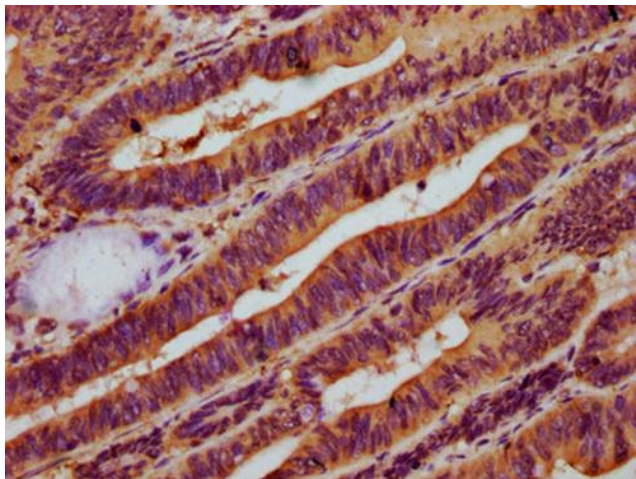
#### Product data:

Product Type:	Primary Antibodies
Applications:	IHC, WB
Recommended Dilution:	Recommended dilution: WB:1:500-1:5000, IHC:1:500-1:1000
Reactivity:	Human
Host:	Rabbit
Isotype:	IgG
Clonality:	Polyclonal
Immunogen:	Recombinant Human N-acetylglucosamine-1-phosphodiester alpha-N-acetylglucosaminidase protein (327-438AA)
Formulation:	Preservative: 0.03% Proclin 300 Constituents: 50% Glycerol, 0.01M PBS, pH 7.4
Concentration:	lot specific
Purification:	>95%, Protein G purified
Conjugation:	Unconjugated
Storage:	Upon receipt, store at -20°C or -80°C. Avoid repeated freeze.
Stability:	1 year from dispatch.
Database Link:	<a href="#">Q9UK23</a>
Background:	Catalyzes the second step in the formation of the mannose 6-phosphate targeting signal on lysosomal enzyme oligosaccharides by removing GlcNAc residues from GlcNAc-alpha-P-mannose moieties, which are formed in the first step. Also hydrolyzes UDP-GlcNAc, a sugar donor for Golgi N-acetylglucosaminyltransferases.

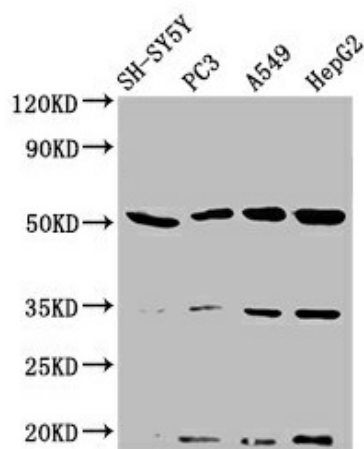


[View online »](#)

## Product images:



IHC image of [TA388637] diluted at 1:500 and staining in paraffin-embedded human colon cancer performed on a Leica Bond™ system. After dewaxing and hydration, antigen retrieval was mediated by high pressure in a citrate buffer (pH 6.0). Section was blocked with 10% normal goat serum 30min at RT. Then primary antibody (1% BSA) was incubated at 4°C overnight. The primary is detected by a biotinylated secondary antibody and visualized using an HRP conjugated SP system.



### Western Blot

Positive WB detected in: SH-SY5Y whole cell lysate, PC-3 whole cell lysate, A549 whole cell lysate, HepG2 whole cell lysate

All lanes: NAGPA antibody at 3.2µg/ml

Secondary

Goat polyclonal to rabbit IgG at 1/50000 dilution

Predicted band size: 57, 53, 34 kDa

Observed band size: 53 kDa