

Product datasheet for **TA388636**

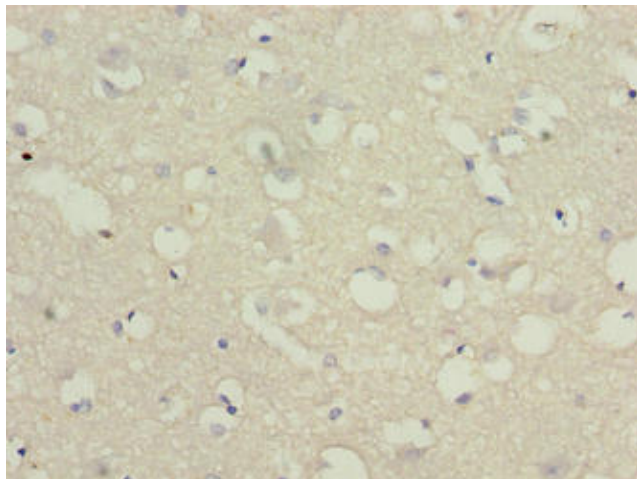
C3orf18 Rabbit Polyclonal Antibody

Product data:

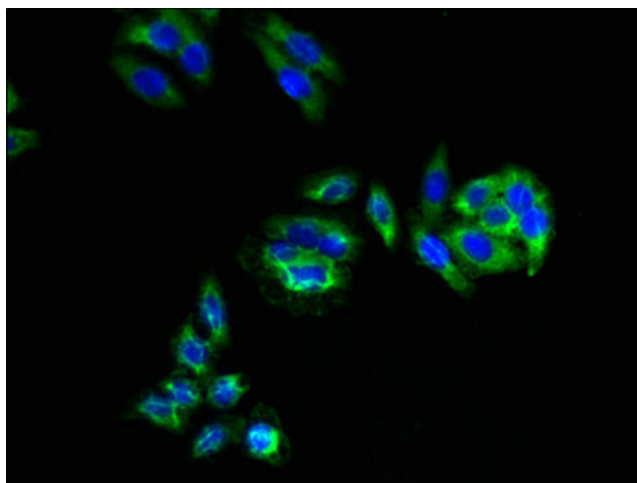
Product Type:	Primary Antibodies
Applications:	IF, IHC, WB
Recommended Dilution:	Recommended dilution: WB:1:500-1:2000, IHC:1:20-1:200, IF:1:50-1:200
Reactivity:	Mouse, Human
Host:	Rabbit
Isotype:	IgG
Clonality:	Polyclonal
Immunogen:	Recombinant Human Uncharacterized protein C3orf18 protein (83-162AA)
Formulation:	Preservative: 0.03% Proclin 300 Constituents: 50% Glycerol, 0.01M PBS, PH 7.4
Concentration:	lot specific
Purification:	Antigen Affinity Purified
Conjugation:	Unconjugated
Storage:	Upon receipt, store at -20°C or -80°C. Avoid repeated freeze.
Stability:	1 year from dispatch.
Database Link:	Q9UK00



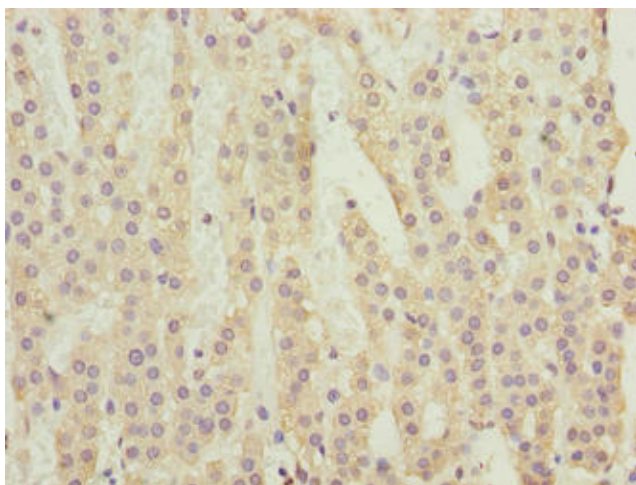
[View online »](#)

Product images:

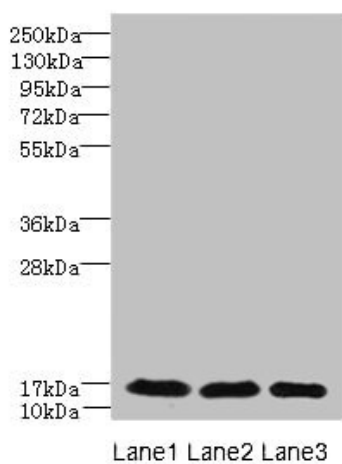
Immunohistochemistry of paraffin-embedded human brain tissue using TA388636 at dilution of 1:100



Immunofluorescent analysis of HepG2 cells using TA388636 at dilution of 1:100 and Alexa Fluor 488-conjugated AffiniPure Goat Anti-Rabbit IgG(H+L)



Immunohistochemistry of paraffin-embedded human adrenal gland tissue using TA388636 at dilution of 1:100



Western blot
 All lanes: C3orf18 antibody at 1.7µg/ml
 Lane 1: Mouse kidney tissue
 Lane 2: Mouse spleen tissue
 Lane 3: Mouse lung tissue
 Secondary
 Goat polyclonal to rabbit IgG at 1/10000 dilution
 Predicted band size: 18, 16 kDa
 Observed band size: 18 kDa