

Product datasheet for **TA388635M**

RWDD2A Rabbit Polyclonal Antibody

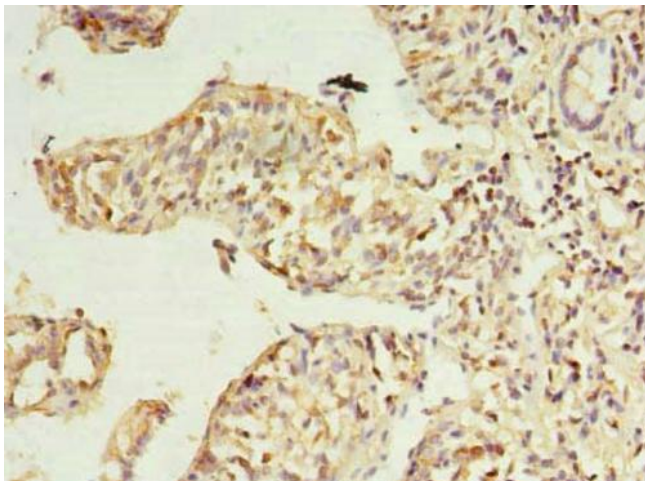
Product data:

Product Type:	Primary Antibodies
Applications:	IHC, WB
Recommended Dilution:	Recommended dilution: WB:1:500-1:2000, IHC:1:20-1:200
Reactivity:	Mouse, Human
Host:	Rabbit
Isotype:	IgG
Clonality:	Polyclonal
Immunogen:	Recombinant Human RWD domain-containing protein 2A protein (1-292AA)
Formulation:	Preservative: 0.03% Proclin 300 Constituents: 50% Glycerol, 0.01M PBS, PH 7.4
Concentration:	lot specific
Purification:	Antigen Affinity Purified
Conjugation:	Unconjugated
Storage:	Upon receipt, store at -20°C or -80°C. Avoid repeated freeze.
Stability:	1 year from dispatch.
Database Link:	Q9UIY3

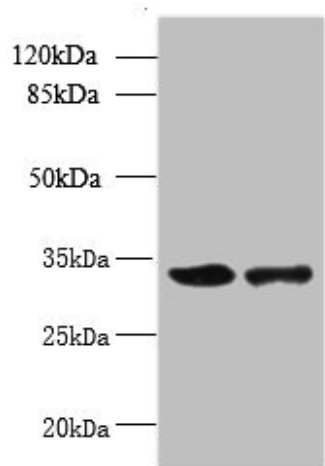


[View online »](#)

Product images:



Immunohistochemistry of paraffin-embedded human small intestine tissue using [TA388635] at dilution of 1:100



Western blot
All lanes: RWDD2A antibody at 0.2μg/ml
Lane 1: Mouse thymus tissue
Lane 2: A549 whole cell lysate
Secondary
Goat polyclonal to rabbit IgG at 1/10000 dilution
Predicted band size: 34, 28 kDa
Observed band size: 34 kDa