

## Product datasheet for **TA388635**

### **RWDD2A Rabbit Polyclonal Antibody**

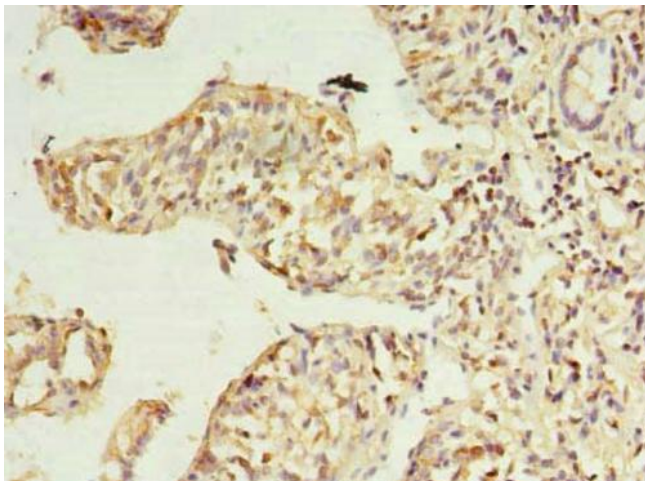
#### **Product data:**

Product Type:	Primary Antibodies
Applications:	IHC, WB
Recommended Dilution:	Recommended dilution: WB:1:500-1:2000, IHC:1:20-1:200
Reactivity:	Mouse, Human
Host:	Rabbit
Isotype:	IgG
Clonality:	Polyclonal
Immunogen:	Recombinant Human RWD domain-containing protein 2A protein (1-292AA)
Formulation:	Preservative: 0.03% Proclin 300 Constituents: 50% Glycerol, 0.01M PBS, PH 7.4
Concentration:	lot specific
Purification:	Antigen Affinity Purified
Conjugation:	Unconjugated
Storage:	Upon receipt, store at -20°C or -80°C. Avoid repeated freeze.
Stability:	1 year from dispatch.
Database Link:	<a href="#">Q9UIY3</a>

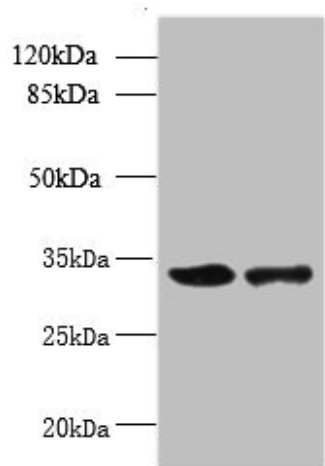


[View online »](#)

## Product images:



Immunohistochemistry of paraffin-embedded human small intestine tissue using TA388635 at dilution of 1:100



Western blot  
All lanes: RWDD2A antibody at 0.2 $\mu$ g/ml  
Lane 1: Mouse thymus tissue  
Lane 2: A549 whole cell lysate  
Secondary  
Goat polyclonal to rabbit IgG at 1/10000 dilution  
Predicted band size: 34, 28 kDa  
Observed band size: 34 kDa