

## Product datasheet for **TA388630**

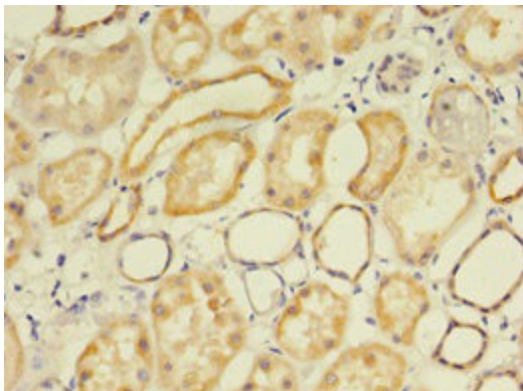
### FLRT1 Rabbit Polyclonal Antibody

#### Product data:

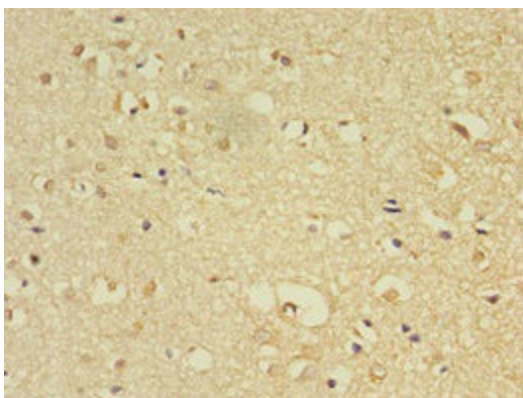
Product Type:	Primary Antibodies
Applications:	IHC, WB
Recommended Dilution:	Recommended dilution: WB:1:500-1:2000, IHC:1:20-1:200
Reactivity:	Mouse, Human
Host:	Rabbit
Isotype:	IgG
Clonality:	Polyclonal
Immunogen:	Recombinant Human Leucine-rich repeat transmembrane protein FLRT1 protein (21-289AA)
Formulation:	Preservative: 0.03% Proclin 300 Constituents: 50% Glycerol, 0.01M PBS, PH 7.4
Concentration:	lot specific
Purification:	>95%, Protein G purified
Conjugation:	Unconjugated
Storage:	Upon receipt, store at -20°C or -80°C. Avoid repeated freeze.
Stability:	1 year from dispatch.
Database Link:	<a href="#">Q9NZU1</a>
Background:	May have a function in cell adhesion and/or receptor signaling.



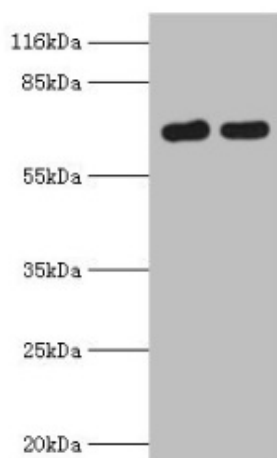
[View online »](#)

**Product images:**

Immunohistochemistry of paraffin-embedded human kidney tissue using TA388630 at dilution of 1:100



Immunohistochemistry of paraffin-embedded human brain tissue using TA388630 at dilution of 1:100



## Western blot

All lanes: FLRT1 antibody at 2 $\mu$ g/ml

Lane 1: Mouse kidney tissue

Lane 2: Hela whole cell lysate

Secondary

Goat polyclonal to rabbit IgG at 1/10000 dilution

Predicted band size: 72 kDa

Observed band size: 72 kDa