

## Product datasheet for **TA388628M**

### MOCS1 Rabbit Polyclonal Antibody

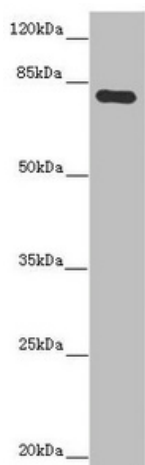
#### Product data:

Product Type:	Primary Antibodies
Applications:	WB
Recommended Dilution:	Recommended dilution: WB:1:1000-1:5000
Reactivity:	Mouse, Human
Host:	Rabbit
Isotype:	IgG
Clonality:	Polyclonal
Immunogen:	Recombinant Human Molybdenum cofactor biosynthesis protein 1 protein (90-360AA)
Formulation:	PBS with 0.02% sodium azide, 50% glycerol, pH7.3.
Concentration:	lot specific
Purification:	Antigen Affinity Purified
Conjugation:	Unconjugated
Storage:	Upon receipt, store at -20°C or -80°C. Avoid repeated freeze.
Stability:	1 year from dispatch.
Database Link:	<a href="#">Q9NZB8</a>
Background:	Isoform MOCS1A and isoform MOCS1B probably form a complex that catalyzes the conversion of 5'-GTP to cyclic pyranopterin monophosphate (cPMP or molybdopterin precursor Z).



[View online »](#)

## Product images:



Western blot

All lanes: MOCS1 antibody at 5.09 µg/ml

+ Mouse heart tissue

Secondary

Goat polyclonal to rabbit IgG at 1/10000 dilution

Predicted band size: 71, 44, 41, 32, 69, 59 kDa

Observed band size: 71 kDa