

## Product datasheet for **TA388623M**

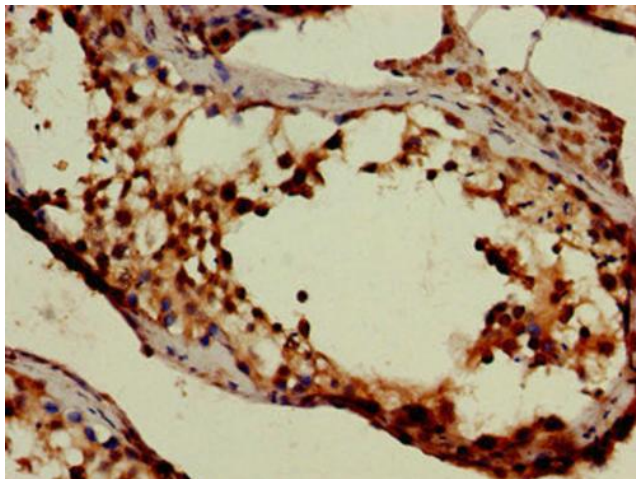
### SLC6A13 Rabbit Polyclonal Antibody

#### Product data:

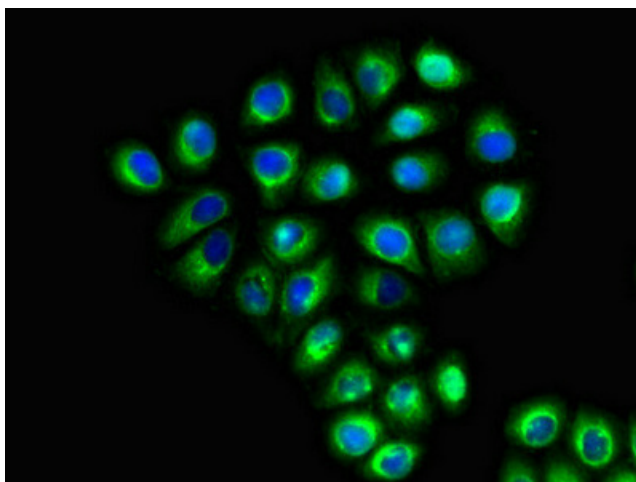
Product Type:	Primary Antibodies
Applications:	IF, IHC, WB
Recommended Dilution:	Recommended dilution: WB:1:500-1:5000, IHC:1:20-1:200, IF:1:50-1:200
Reactivity:	Mouse, Human
Host:	Rabbit
Isotype:	IgG
Clonality:	Polyclonal
Immunogen:	Recombinant Human Sodium- and chloride-dependent GABA transporter 2 protein (1-40AA)
Formulation:	Preservative: 0.03% Proclin 300 Constituents: 50% Glycerol, 0.01M PBS, pH 7.4
Concentration:	lot specific
Purification:	>95%, Protein G purified
Conjugation:	Unconjugated
Storage:	Upon receipt, store at -20°C or -80°C. Avoid repeated freeze.
Stability:	1 year from dispatch.
Database Link:	<a href="#">Q9NSD5</a>
Background:	Sodium-dependent GABA and taurine transporter. In presynaptic terminals, regulates GABA signaling termination through GABA uptake. May also be involved in beta-alanine transport.

[View online »](#)

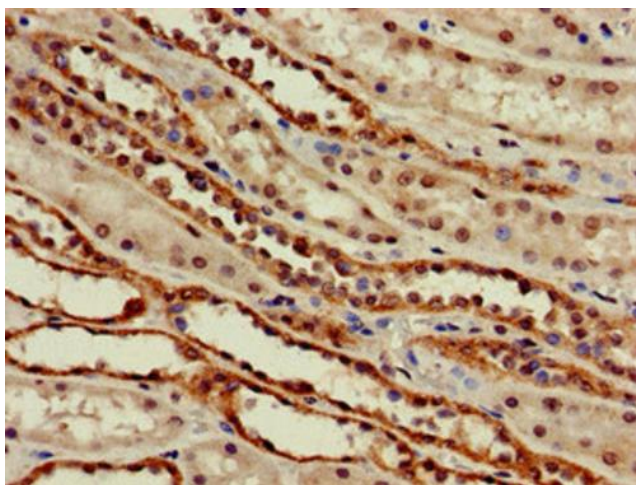
## Product images:



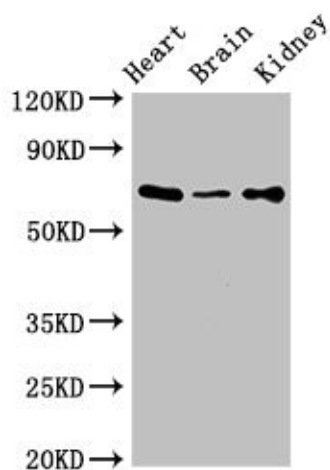
Immunohistochemistry of paraffin-embedded human testis tissue using [TA388623] at dilution of 1:100



Immunofluorescent analysis of A549 cells using [TA388623] at dilution of 1:100 and Alexa Fluor 488-conjugated AffiniPure Goat Anti-Rabbit IgG(H+L)



Immunohistochemistry of paraffin-embedded human kidney tissue using [TA388623] at dilution of 1:100



Western Blot  
Positive WB detected in: Mouse heart tissue, Mouse brain tissue, Mouse kidney tissue  
All lanes: SLC6A13 antibody at 3µg/ml  
Secondary  
Goat polyclonal to rabbit IgG at 1/50000 dilution  
Predicted band size: 69, 58, 11 kDa  
Observed band size: 69 kDa